

Global Fittings Concepts, Inc. 2016 Edition

INDUSTRIAL FITTINGS FOR A CHANGING WORLD.

Our modular push-to-connect fittings have been designed for a multitude of industries within the pneumatics and military fields.

FACTORY PROCESS AUTOMATION

- ASSEMBLY & ROBOTICS

LIFE SCIENCE

- PHARMACEUTICAL
MANUFACTURING

RESOURCES

- PETROCHEMICAL & FUEL
- METAL PROCESSING

ELECTRONICS

- LABORATORY ENVIRONMENTS
- MILITARY DEVICES & SYSTEMS



GFC the new trend setter is giving the push-to-connect industry new options when it comes to push-fit fittings. With GFC's patented locking mechanism our modular fittings quickly disconnect and reconnect within seconds, allowing hundreds of connection possibilities.



**3 BASE MODULES WITH 7 CONFIGURATIONS
OFFERING HUNDREDS OF CONNECTIONS**

**316SS ELECTRO POLISHED FOR HARSH
ENVIRONMENTS OR HYGIENIC APPLICATIONS**

INCH & METRIC TUBE CONNECT MODULES

**GLOBAL THREAD MODULES COMPATIBLE
WITH NPT, R (BSPT), RP OR G (BSPP)**

NO RESTRICTIVE FLOW ON ANY CONNECTION

EASY TO CHANGE & MAINTAIN O-RINGS

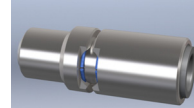
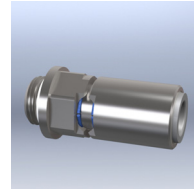
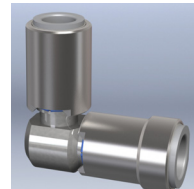
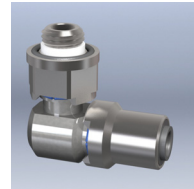
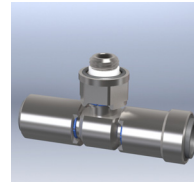
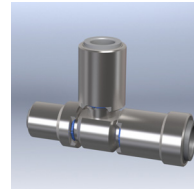
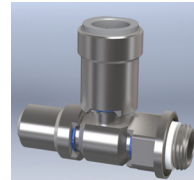
SUITABLE FOR SOFT METAL OR PLASTIC TUBING

DISCONNECT IS FAST AND EASY

TABLE OF CONTENTS



1	Introduction	→
2	Table of Contents	→
3	Series RT: Run Tee	→
7	Series UT: Union Tee	→
11	Series BT: Branch Tee	→
14	Series ME: Male Elbow	→
16	Series UE: Union Elbow	→
18	Series MC: Male Connector	→
20	Series US: Union Straight	→
22	Technical Specifications	→
25	Warranty Information	→
26	Terms and Conditions of Sale	→



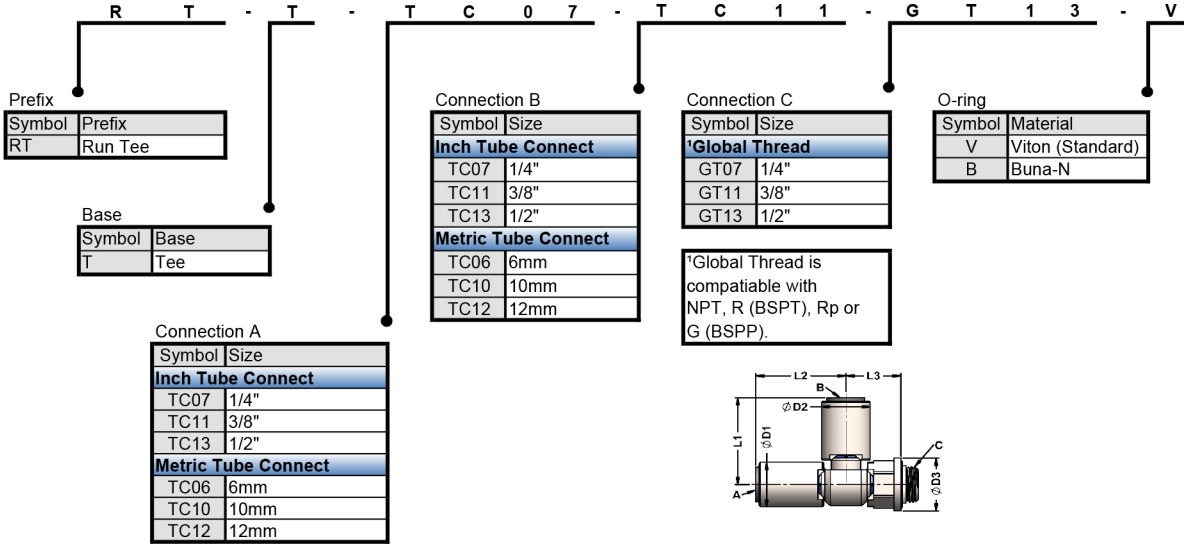
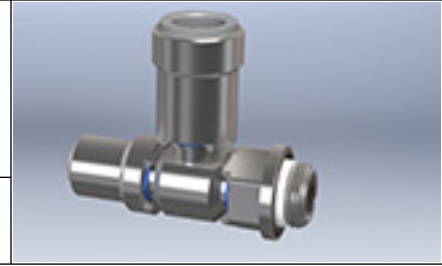
WWW.GLOBALFITTINGSINC.COM



Industrial Fittings For
A Changing World

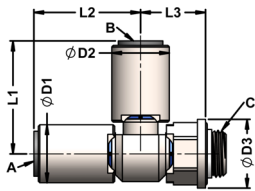
How To Order

ENGLISH & METRIC SIZE RUN TEE, SS



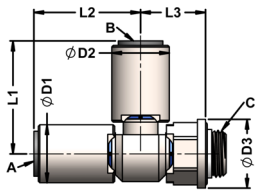
Industrial Fittings For
A Changing World

Run Tee Assemblies



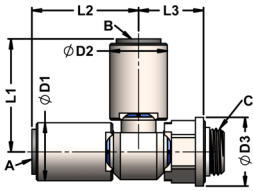
Model Number	Tubing O.D. / Global Thread			Length in[mm]			Diameter in[mm]		
	A	B	C	L1	L2	L3	D1	D2	D3
o = Viton,B=Buna-N									
RT-T-TC06-TC06-GT07-o	6mm	6mm	1/4	1.36 [34.5]	1.29 [32.8]	0.88 [22.4]	0.78 [19.8]	0.78 [19.8]	0.84 [21.3]
RT-T-TC06-TC06-GT11-o	6mm	6mm	3/8	1.36 [34.5]	1.29 [32.8]	0.88 [22.4]	0.78 [19.8]	0.78 [19.8]	0.93 [23.6]
RT-T-TC06-TC06-GT13-o	6mm	6mm	1/2	1.36 [34.5]	1.29 [32.8]	0.88 [22.4]	0.78 [19.8]	0.78 [19.8]	1.14 [29.0]
RT-T-TC06-TC07-GT07-o	6mm	1/4"	1/4	1.36 [34.5]	1.29 [32.8]	0.88 [22.4]	0.78 [19.8]	0.78 [19.8]	0.84 [21.3]
RT-T-TC06-TC07-GT11-o	6mm	1/4"	3/8	1.36 [34.5]	1.29 [32.8]	0.88 [22.4]	0.78 [19.8]	0.78 [19.8]	0.93 [23.6]
RT-T-TC06-TC07-GT13-o	6mm	1/4"	1/2	1.36 [34.5]	1.29 [32.8]	0.88 [22.4]	0.78 [19.8]	0.78 [19.8]	1.14 [29.0]
RT-T-TC06-TC10-GT07-o	6mm	10mm	1/4	1.52 [38.6]	1.29 [32.8]	0.88 [22.4]	0.78 [19.8]	0.78 [19.8]	0.84 [21.3]
RT-T-TC06-TC10-GT11-o	6mm	10mm	3/8	1.52 [38.6]	1.29 [32.8]	0.88 [22.4]	0.78 [19.8]	0.78 [19.8]	0.93 [23.6]
RT-T-TC06-TC10-GT13-o	6mm	10mm	1/2	1.52 [38.6]	1.29 [32.8]	0.88 [22.4]	0.78 [19.8]	0.78 [19.8]	1.14 [29.0]
RT-T-TC06-TC11-GT07-o	6mm	3/8"	1/4	1.52 [38.6]	1.29 [32.8]	0.88 [22.4]	0.78 [19.8]	0.78 [19.8]	0.84 [21.3]
RT-T-TC06-TC11-GT11-o	6mm	3/8"	3/8	1.52 [38.6]	1.29 [32.8]	0.88 [22.4]	0.78 [19.8]	0.78 [19.8]	0.93 [23.6]
RT-T-TC06-TC11-GT13-o	6mm	3/8"	1/2	1.52 [38.6]	1.29 [32.8]	0.88 [22.4]	0.78 [19.8]	0.78 [19.8]	1.14 [29.0]
RT-T-TC06-TC12-GT07-o	6mm	12mm	1/4	1.63 [41.4]	1.29 [32.8]	0.88 [22.4]	0.78 [19.8]	0.88 [22.4]	0.84 [21.3]
RT-T-TC06-TC12-GT11-o	6mm	12mm	3/8	1.63 [41.4]	1.29 [32.8]	0.88 [22.4]	0.78 [19.8]	0.88 [22.4]	0.93 [23.6]
RT-T-TC06-TC12-GT13-o	6mm	12mm	1/2	1.63 [41.4]	1.29 [32.8]	0.88 [22.4]	0.78 [19.8]	0.88 [22.4]	1.14 [29.0]
RT-T-TC06-TC13-GT07-o	6mm	1/2"	1/4	1.63 [41.4]	1.29 [32.8]	0.88 [22.4]	0.78 [19.8]	0.88 [22.4]	0.84 [21.3]
RT-T-TC06-TC13-GT11-o	6mm	1/2"	3/8	1.63 [41.4]	1.29 [32.8]	0.88 [22.4]	0.78 [19.8]	0.88 [22.4]	0.93 [23.6]
RT-T-TC06-TC13-GT13-o	6mm	1/2"	1/2	1.63 [41.4]	1.29 [32.8]	0.88 [22.4]	0.78 [19.8]	0.88 [22.4]	1.14 [29.0]
RT-T-TC07-TC06-GT07-o	1/4"	6mm	1/4	1.36 [34.5]	1.29 [32.8]	0.88 [22.4]	0.78 [19.8]	0.78 [19.8]	0.84 [21.3]
RT-T-TC07-TC06-GT11-o	1/4"	6mm	3/8	1.36 [34.5]	1.29 [32.8]	0.88 [22.4]	0.78 [19.8]	0.78 [19.8]	0.93 [23.6]
RT-T-TC07-TC06-GT13-o	1/4"	6mm	1/2	1.36 [34.5]	1.29 [32.8]	0.88 [22.4]	0.78 [19.8]	0.78 [19.8]	1.14 [29.0]
RT-T-TC07-TC07-GT07-o	1/4"	1/4"	1/4	1.36 [34.5]	1.29 [32.8]	0.88 [22.4]	0.78 [19.8]	0.78 [19.8]	0.84 [21.3]
RT-T-TC07-TC07-GT11-o	1/4"	1/4"	3/8	1.36 [34.5]	1.29 [32.8]	0.88 [22.4]	0.78 [19.8]	0.78 [19.8]	0.93 [23.6]
RT-T-TC07-TC07-GT13-o	1/4"	1/4"	1/2	1.36 [34.5]	1.29 [32.8]	0.88 [22.4]	0.78 [19.8]	0.78 [19.8]	1.14 [29.0]
RT-T-TC07-TC10-GT07-o	1/4"	10mm	1/4	1.52 [38.6]	1.29 [32.8]	0.88 [22.4]	0.78 [19.8]	0.78 [19.8]	0.84 [21.3]
RT-T-TC07-TC10-GT11-o	1/4"	10mm	3/8	1.52 [38.6]	1.29 [32.8]	0.88 [22.4]	0.78 [19.8]	0.78 [19.8]	0.93 [23.6]
RT-T-TC07-TC10-GT13-o	1/4"	10mm	1/2	1.52 [38.6]	1.29 [32.8]	0.88 [22.4]	0.78 [19.8]	0.78 [19.8]	1.14 [29.0]
RT-T-TC07-TC11-GT07-o	1/4"	3/8"	1/4	1.52 [38.6]	1.29 [32.8]	0.88 [22.4]	0.78 [19.8]	0.78 [19.8]	0.84 [21.3]
RT-T-TC07-TC11-GT11-o	1/4"	3/8"	3/8	1.52 [38.6]	1.29 [32.8]	0.88 [22.4]	0.78 [19.8]	0.78 [19.8]	0.93 [23.6]
RT-T-TC07-TC11-GT13-o	1/4"	3/8"	1/2	1.52 [38.6]	1.29 [32.8]	0.88 [22.4]	0.78 [19.8]	0.78 [19.8]	1.14 [29.0]
RT-T-TC07-TC12-GT07-o	1/4"	12mm	1/4	1.63 [41.4]	1.29 [32.8]	0.88 [22.4]	0.78 [19.8]	0.88 [22.4]	0.84 [21.3]
RT-T-TC07-TC12-GT11-o	1/4"	12mm	3/8	1.63 [41.4]	1.29 [32.8]	0.88 [22.4]	0.78 [19.8]	0.88 [22.4]	0.93 [23.6]
RT-T-TC07-TC12-GT13-o	1/4"	12mm	1/2	1.63 [41.4]	1.29 [32.8]	0.88 [22.4]	0.78 [19.8]	0.88 [22.4]	1.14 [29.0]
RT-T-TC07-TC13-GT07-o	1/4"	1/2"	1/4	1.63 [41.4]	1.29 [32.8]	0.88 [22.4]	0.78 [19.8]	0.88 [22.4]	0.84 [21.3]
RT-T-TC07-TC13-GT11-o	1/4"	1/2"	3/8	1.63 [41.4]	1.29 [32.8]	0.88 [22.4]	0.78 [19.8]	0.88 [22.4]	0.93 [23.6]
RT-T-TC07-TC13-GT13-o	1/4"	1/2"	1/2	1.63 [41.4]	1.29 [32.8]	0.88 [22.4]	0.78 [19.8]	0.88 [22.4]	1.14 [29.0]
RT-T-TC10-TC06-GT07-o	10mm	6mm	1/4	1.36 [34.5]	1.45 [36.8]	0.88 [22.4]	0.78 [19.8]	0.78 [19.8]	0.84 [21.3]
RT-T-TC10-TC06-GT11-o	10mm	6mm	3/8	1.36 [34.5]	1.45 [36.8]	0.88 [22.4]	0.78 [19.8]	0.78 [19.8]	0.93 [23.6]
RT-T-TC10-TC06-GT13-o	10mm	6mm	1/2	1.36 [34.5]	1.45 [36.8]	0.88 [22.4]	0.78 [19.8]	0.78 [19.8]	1.14 [29.0]
RT-T-TC10-TC07-GT07-o	10mm	1/4"	1/4	1.36 [34.5]	1.45 [36.8]	0.88 [22.4]	0.78 [19.8]	0.78 [19.8]	0.84 [21.3]
RT-T-TC10-TC07-GT11-o	10mm	1/4"	3/8	1.36 [34.5]	1.45 [36.8]	0.88 [22.4]	0.78 [19.8]	0.78 [19.8]	0.93 [23.6]
RT-T-TC10-TC07-GT13-o	10mm	1/4"	1/2	1.36 [34.5]	1.45 [36.8]	0.88 [22.4]	0.78 [19.8]	0.78 [19.8]	1.14 [29.0]
RT-T-TC10-TC10-GT07-o	10mm	10mm	1/4	1.52 [38.6]	1.45 [36.8]	0.88 [22.4]	0.78 [19.8]	0.78 [19.8]	0.84 [21.3]
RT-T-TC10-TC10-GT11-o	10mm	10mm	3/8	1.52 [38.6]	1.45 [36.8]	0.88 [22.4]	0.78 [19.8]	0.78 [19.8]	0.93 [23.6]
RT-T-TC10-TC10-GT13-o	10mm	10mm	1/2	1.52 [38.6]	1.45 [36.8]	0.88 [22.4]	0.78 [19.8]	0.78 [19.8]	1.14 [29.0]
RT-T-TC10-TC11-GT07-o	10mm	3/8"	1/4	1.52 [38.6]	1.45 [36.8]	0.88 [22.4]	0.78 [19.8]	0.78 [19.8]	0.84 [21.3]
RT-T-TC10-TC11-GT11-o	10mm	3/8"	3/8	1.52 [38.6]	1.45 [36.8]	0.88 [22.4]	0.78 [19.8]	0.78 [19.8]	0.93 [23.6]
RT-T-TC10-TC11-GT13-o	10mm	3/8"	1/2	1.52 [38.6]	1.45 [36.8]	0.88 [22.4]	0.78 [19.8]	0.78 [19.8]	1.14 [29.0]
RT-T-TC10-TC12-GT07-o	10mm	12mm	1/4	1.63 [41.4]	1.45 [36.8]	0.88 [22.4]	0.78 [19.8]	0.88 [22.4]	0.84 [21.3]
RT-T-TC10-TC12-GT11-o	10mm	12mm	3/8	1.63 [41.4]	1.45 [36.8]	0.88 [22.4]	0.78 [19.8]	0.88 [22.4]	0.93 [23.6]
RT-T-TC10-TC12-GT13-o	10mm	12mm	1/2	1.63 [41.4]	1.45 [36.8]	0.88 [22.4]	0.78 [19.8]	0.88 [22.4]	1.14 [29.0]
RT-T-TC10-TC13-GT07-o	10mm	1/2"	1/4	1.63 [41.4]	1.45 [36.8]	0.88 [22.4]	0.78 [19.8]	0.88 [22.4]	0.84 [21.3]
RT-T-TC10-TC13-GT11-o	10mm	1/2"	3/8	1.63 [41.4]	1.45 [36.8]	0.88 [22.4]	0.78 [19.8]	0.88 [22.4]	0.93 [23.6]

Run Tee Assemblies



Model Number	Tubing O.D. / Global Thread			Length in[mm]			Diameter in[mm]		
	A	B	C	L1	L2	L3	D1	D2	D3
o = Viton,B=Buna-N RT-T-TC10-TC13-GT13-o	10mm	1/2"	1/2	1.63 [41.4]	1.45 [36.8]	0.88 [22.4]	0.78 [19.8]	0.88 [22.4]	1.14 [29.0]
RT-T-TC11-TC06-GT07-o	3/8"	6mm	1/4	1.36 [34.5]	1.45 [36.8]	0.88 [22.4]	0.78 [19.8]	0.78 [19.8]	0.84 [21.3]
RT-T-TC11-TC06-GT11-o	3/8"	6mm	3/8	1.36 [34.5]	1.45 [36.8]	0.88 [22.4]	0.78 [19.8]	0.78 [19.8]	0.93 [23.6]
RT-T-TC11-TC06-GT13-o	3/8"	6mm	1/2	1.36 [34.5]	1.45 [36.8]	0.88 [22.4]	0.78 [19.8]	0.78 [19.8]	1.14 [29.0]
RT-T-TC11-TC07-GT07-o	3/8"	1/4"	1/4	1.36 [34.5]	1.45 [36.8]	0.88 [22.4]	0.78 [19.8]	0.78 [19.8]	0.84 [21.3]
RT-T-TC11-TC07-GT11-o	3/8"	1/4"	3/8	1.36 [34.5]	1.45 [36.8]	0.88 [22.4]	0.78 [19.8]	0.78 [19.8]	0.93 [23.6]
RT-T-TC11-TC07-GT13-o	3/8"	1/4"	1/2	1.36 [34.5]	1.45 [36.8]	0.88 [22.4]	0.78 [19.8]	0.78 [19.8]	1.14 [29.0]
RT-T-TC11-TC10-GT07-o	3/8"	10mm	1/4	1.52 [38.6]	1.45 [36.8]	0.88 [22.4]	0.78 [19.8]	0.78 [19.8]	0.84 [21.3]
RT-T-TC11-TC10-GT11-o	3/8"	10mm	3/8	1.52 [38.6]	1.45 [36.8]	0.88 [22.4]	0.78 [19.8]	0.78 [19.8]	0.93 [23.6]
RT-T-TC11-TC10-GT13-o	3/8"	10mm	1/2	1.52 [38.6]	1.45 [36.8]	0.88 [22.4]	0.78 [19.8]	0.78 [19.8]	1.14 [29.0]
RT-T-TC11-TC11-GT07-o	3/8"	3/8"	1/4	1.52 [38.6]	1.45 [36.8]	0.88 [22.4]	0.78 [19.8]	0.78 [19.8]	0.84 [21.3]
RT-T-TC11-TC11-GT11-o	3/8"	3/8"	3/8	1.52 [38.6]	1.45 [36.8]	0.88 [22.4]	0.78 [19.8]	0.78 [19.8]	0.93 [23.6]
RT-T-TC11-TC11-GT13-o	3/8"	3/8"	1/2	1.52 [38.6]	1.45 [36.8]	0.88 [22.4]	0.78 [19.8]	0.78 [19.8]	1.14 [29.0]
RT-T-TC11-TC12-GT07-o	3/8"	12mm	1/4	1.63 [41.4]	1.45 [36.8]	0.88 [22.4]	0.78 [19.8]	0.88 [22.4]	0.84 [21.3]
RT-T-TC11-TC12-GT11-o	3/8"	12mm	3/8	1.63 [41.4]	1.45 [36.8]	0.88 [22.4]	0.78 [19.8]	0.88 [22.4]	0.93 [23.6]
RT-T-TC11-TC12-GT13-o	3/8"	12mm	1/2	1.63 [41.4]	1.45 [36.8]	0.88 [22.4]	0.78 [19.8]	0.88 [22.4]	1.14 [29.0]
RT-T-TC11-TC13-GT07-o	3/8"	1/2"	1/4	1.63 [41.4]	1.45 [36.8]	0.88 [22.4]	0.78 [19.8]	0.88 [22.4]	0.84 [21.3]
RT-T-TC11-TC13-GT11-o	3/8"	1/2"	3/8	1.63 [41.4]	1.45 [36.8]	0.88 [22.4]	0.78 [19.8]	0.88 [22.4]	0.93 [23.6]
RT-T-TC11-TC13-GT13-o	3/8"	1/2"	1/2	1.63 [41.4]	1.45 [36.8]	0.88 [22.4]	0.78 [19.8]	0.88 [22.4]	1.14 [29.0]
RT-T-TC12-TC06-GT07-o	12mm	6mm	1/4	1.36 [34.5]	1.55 [39.4]	0.88 [22.4]	0.88 [22.4]	0.78 [19.8]	0.84 [21.3]
RT-T-TC12-TC06-GT11-o	12mm	6mm	3/8	1.36 [34.5]	1.55 [39.4]	0.88 [22.4]	0.88 [22.4]	0.78 [19.8]	0.93 [23.6]
RT-T-TC12-TC06-GT13-o	12mm	6mm	1/2	1.36 [34.5]	1.55 [39.4]	0.88 [22.4]	0.88 [22.4]	0.78 [19.8]	1.14 [29.0]
RT-T-TC12-TC07-GT07-o	12mm	1/4"	1/4	1.36 [34.5]	1.55 [39.4]	0.88 [22.4]	0.88 [22.4]	0.78 [19.8]	0.84 [21.3]
RT-T-TC12-TC07-GT11-o	12mm	1/4"	3/8	1.36 [34.5]	1.55 [39.4]	0.88 [22.4]	0.88 [22.4]	0.78 [19.8]	0.93 [23.6]
RT-T-TC12-TC07-GT13-o	12mm	1/4"	1/2	1.36 [34.5]	1.55 [39.4]	0.88 [22.4]	0.88 [22.4]	0.78 [19.8]	1.14 [29.0]
RT-T-TC12-TC10-GT07-o	12mm	10mm	1/4	1.52 [38.6]	1.55 [39.4]	0.88 [22.4]	0.88 [22.4]	0.78 [19.8]	0.84 [21.3]
RT-T-TC12-TC10-GT11-o	12mm	10mm	3/8	1.52 [38.6]	1.55 [39.4]	0.88 [22.4]	0.88 [22.4]	0.78 [19.8]	0.93 [23.6]
RT-T-TC12-TC10-GT13-o	12mm	10mm	1/2	1.52 [38.6]	1.55 [39.4]	0.88 [22.4]	0.88 [22.4]	0.78 [19.8]	1.14 [29.0]
RT-T-TC12-TC11-GT07-o	12mm	3/8"	1/4	1.52 [38.6]	1.55 [39.4]	0.88 [22.4]	0.88 [22.4]	0.78 [19.8]	0.84 [21.3]
RT-T-TC12-TC11-GT11-o	12mm	3/8"	3/8	1.52 [38.6]	1.55 [39.4]	0.88 [22.4]	0.88 [22.4]	0.78 [19.8]	0.93 [23.6]
RT-T-TC12-TC11-GT13-o	12mm	3/8"	1/2	1.52 [38.6]	1.55 [39.4]	0.88 [22.4]	0.88 [22.4]	0.78 [19.8]	1.14 [29.0]
RT-T-TC12-TC12-GT07-o	12mm	12mm	1/4	1.63 [41.4]	1.55 [39.4]	0.88 [22.4]	0.88 [22.4]	0.88 [22.4]	0.84 [21.3]
RT-T-TC12-TC12-GT11-o	12mm	12mm	3/8	1.63 [41.4]	1.55 [39.4]	0.88 [22.4]	0.88 [22.4]	0.88 [22.4]	0.93 [23.6]
RT-T-TC12-TC12-GT13-o	12mm	12mm	1/2	1.63 [41.4]	1.55 [39.4]	0.88 [22.4]	0.88 [22.4]	0.88 [22.4]	1.14 [29.0]
RT-T-TC12-TC13-GT07-o	12mm	1/2"	1/4	1.63 [41.4]	1.55 [39.4]	0.88 [22.4]	0.88 [22.4]	0.88 [22.4]	0.84 [21.3]
RT-T-TC12-TC13-GT11-o	12mm	1/2"	3/8	1.63 [41.4]	1.55 [39.4]	0.88 [22.4]	0.88 [22.4]	0.88 [22.4]	0.93 [23.6]
RT-T-TC12-TC13-GT13-o	12mm	1/2"	1/2	1.63 [41.4]	1.55 [39.4]	0.88 [22.4]	0.88 [22.4]	0.88 [22.4]	1.14 [29.0]
RT-T-TC13-TC06-GT07-o	1/2"	6mm	1/4	1.36 [34.5]	1.55 [39.4]	0.88 [22.4]	0.88 [22.4]	0.78 [19.8]	0.84 [21.3]
RT-T-TC13-TC06-GT11-o	1/2"	6mm	3/8	1.36 [34.5]	1.55 [39.4]	0.88 [22.4]	0.88 [22.4]	0.78 [19.8]	0.93 [23.6]
RT-T-TC13-TC06-GT13-o	1/2"	6mm	1/2	1.36 [34.5]	1.55 [39.4]	0.88 [22.4]	0.88 [22.4]	0.78 [19.8]	1.14 [29.0]
RT-T-TC13-TC07-GT07-o	1/2"	1/4"	1/4	1.36 [34.5]	1.55 [39.4]	0.88 [22.4]	0.88 [22.4]	0.78 [19.8]	0.84 [21.3]
RT-T-TC13-TC07-GT11-o	1/2"	1/4"	3/8	1.36 [34.5]	1.55 [39.4]	0.88 [22.4]	0.88 [22.4]	0.78 [19.8]	0.93 [23.6]
RT-T-TC13-TC07-GT13-o	1/2"	1/4"	1/2	1.36 [34.5]	1.55 [39.4]	0.88 [22.4]	0.88 [22.4]	0.78 [19.8]	1.14 [29.0]
RT-T-TC13-TC10-GT07-o	1/2"	10mm	1/4	1.52 [38.6]	1.55 [39.4]	0.88 [22.4]	0.88 [22.4]	0.78 [19.8]	0.84 [21.3]
RT-T-TC13-TC10-GT11-o	1/2"	10mm	3/8	1.52 [38.6]	1.55 [39.4]	0.88 [22.4]	0.88 [22.4]	0.78 [19.8]	0.93 [23.6]
RT-T-TC13-TC10-GT13-o	1/2"	10mm	1/2	1.52 [38.6]	1.55 [39.4]	0.88 [22.4]	0.88 [22.4]	0.78 [19.8]	1.14 [29.0]
RT-T-TC13-TC11-GT07-o	1/2"	3/8"	1/4	1.52 [38.6]	1.55 [39.4]	0.88 [22.4]	0.88 [22.4]	0.78 [19.8]	0.84 [21.3]
RT-T-TC13-TC11-GT11-o	1/2"	3/8"	3/8	1.52 [38.6]	1.55 [39.4]	0.88 [22.4]	0.88 [22.4]	0.78 [19.8]	0.93 [23.6]
RT-T-TC13-TC11-GT13-o	1/2"	3/8"	1/2	1.52 [38.6]	1.55 [39.4]	0.88 [22.4]	0.88 [22.4]	0.78 [19.8]	1.14 [29.0]
RT-T-TC13-TC12-GT07-o	1/2"	12mm	1/4	1.63 [41.4]	1.55 [39.4]	0.88 [22.4]	0.88 [22.4]	0.88 [22.4]	0.84 [21.3]
RT-T-TC13-TC12-GT11-o	1/2"	12mm	3/8	1.63 [41.4]	1.55 [39.4]	0.88 [22.4]	0.88 [22.4]	0.88 [22.4]	0.93 [23.6]
RT-T-TC13-TC12-GT13-o	1/2"	12mm	1/2	1.63 [41.4]	1.55 [39.4]	0.88 [22.4]	0.88 [22.4]	0.88 [22.4]	1.14 [29.0]
RT-T-TC13-TC13-GT07-o	1/2"	1/2"	1/4	1.63 [41.4]	1.55 [39.4]	0.88 [22.4]	0.88 [22.4]	0.88 [22.4]	0.84 [21.3]

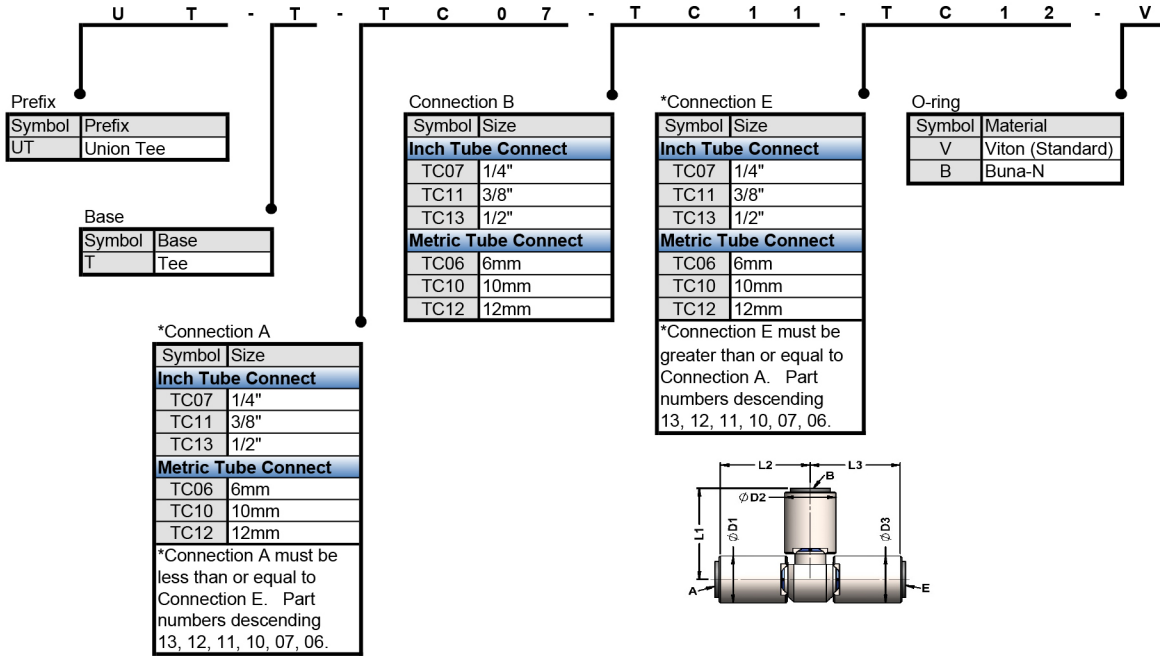
Run Tee Assemblies



Model Number	Tubing O.D. / Global Thread			Length in[mm]			Diameter in[mm]		
	A	B	C	L1	L2	L3	D1	D2	D3
o = Viton,B=Buna-N									
RT-T-TC13-TC13-GT11-o	1/2"	1/2"	3/8	1.63 [41.4]	1.55 [39.4]	0.88 [22.4]	0.88 [22.4]	0.88 [22.4]	0.93 [23.6]
RT-T-TC13-TC13-GT13-o	1/2"	1/2"	1/2	1.63 [41.4]	1.55 [39.4]	0.88 [22.4]	0.88 [22.4]	0.88 [22.4]	1.14 [29.0]

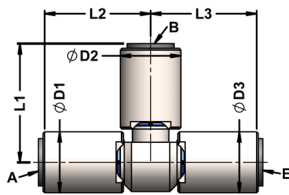
How To Order

ENGLISH & METRIC SIZE UNION TEE, SS



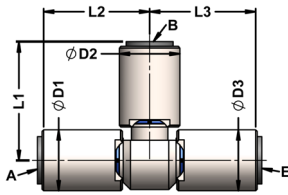
Industrial Fittings For
A Changing World

Union Tee Assemblies



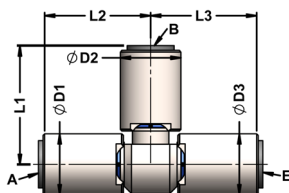
Model Number	Tubing O.D. / Thread in[mm]			Length in[mm]			Diameter in[mm]		
	A	B	E	L1	L2	L3	D1	D2	D3
UT-T-TC06-TC06-TC06-o	6mm	6mm	6mm	1.36 [34.5]	1.29 [32.8]	1.29 [32.8]	0.78 [19.8]	0.78 [19.8]	0.78 [19.8]
UT-T-TC06-TC06-TC07-o	6mm	6mm	1/4"	1.36 [34.5]	1.29 [32.8]	1.29 [32.8]	0.78 [19.8]	0.78 [19.8]	0.78 [19.8]
UT-T-TC06-TC06-TC10-o	6mm	6mm	10mm	1.36 [34.5]	1.29 [32.8]	1.45 [36.8]	0.78 [19.8]	0.78 [19.8]	0.78 [19.8]
UT-T-TC06-TC06-TC11-o	6mm	6mm	3/8"	1.36 [34.5]	1.29 [32.8]	1.45 [36.8]	0.78 [19.8]	0.78 [19.8]	0.78 [19.8]
UT-T-TC06-TC06-TC12-o	6mm	6mm	12mm	1.36 [34.5]	1.29 [32.8]	1.55 [39.4]	0.78 [19.8]	0.78 [19.8]	0.88 [22.4]
UT-T-TC06-TC06-TC13-o	6mm	6mm	1/2"	1.36 [34.5]	1.29 [32.8]	1.55 [39.4]	0.78 [19.8]	0.78 [19.8]	0.88 [22.4]
UT-T-TC06-TC07-TC06-o	6mm	1/4"	6mm	1.36 [34.5]	1.29 [32.8]	1.29 [32.8]	0.78 [19.8]	0.78 [19.8]	0.78 [19.8]
UT-T-TC06-TC07-TC07-o	6mm	1/4"	1/4"	1.36 [34.5]	1.29 [32.8]	1.29 [32.8]	0.78 [19.8]	0.78 [19.8]	0.78 [19.8]
UT-T-TC06-TC07-TC10-o	6mm	1/4"	10mm	1.36 [34.5]	1.29 [32.8]	1.45 [36.8]	0.78 [19.8]	0.78 [19.8]	0.78 [19.8]
UT-T-TC06-TC07-TC11-o	6mm	1/4"	3/8"	1.36 [34.5]	1.29 [32.8]	1.45 [36.8]	0.78 [19.8]	0.78 [19.8]	0.78 [19.8]
UT-T-TC06-TC07-TC12-o	6mm	1/4"	12mm	1.36 [34.5]	1.29 [32.8]	1.55 [39.4]	0.78 [19.8]	0.78 [19.8]	0.88 [22.4]
UT-T-TC06-TC07-TC13-o	6mm	1/4"	1/2"	1.36 [34.5]	1.29 [32.8]	1.55 [39.4]	0.78 [19.8]	0.78 [19.8]	0.88 [22.4]
UT-T-TC06-TC10-TC06-o	6mm	10mm	6mm	1.52 [38.6]	1.29 [32.8]	1.29 [32.8]	0.78 [19.8]	0.78 [19.8]	0.78 [19.8]
UT-T-TC06-TC10-TC07-o	6mm	10mm	1/4"	1.52 [38.6]	1.29 [32.8]	1.29 [32.8]	0.78 [19.8]	0.78 [19.8]	0.78 [19.8]
UT-T-TC06-TC10-TC10-o	6mm	10mm	10mm	1.52 [38.6]	1.29 [32.8]	1.45 [36.8]	0.78 [19.8]	0.78 [19.8]	0.78 [19.8]
UT-T-TC06-TC10-TC11-o	6mm	10mm	3/8"	1.52 [38.6]	1.29 [32.8]	1.45 [36.8]	0.78 [19.8]	0.78 [19.8]	0.78 [19.8]
UT-T-TC06-TC10-TC12-o	6mm	10mm	12mm	1.52 [38.6]	1.29 [32.8]	1.55 [39.4]	0.78 [19.8]	0.78 [19.8]	0.88 [22.4]
UT-T-TC06-TC10-TC13-o	6mm	10mm	1/2"	1.52 [38.6]	1.29 [32.8]	1.55 [39.4]	0.78 [19.8]	0.78 [19.8]	0.88 [22.4]
UT-T-TC06-TC11-TC06-o	6mm	3/8"	6mm	1.52 [38.6]	1.29 [32.8]	1.29 [32.8]	0.78 [19.8]	0.78 [19.8]	0.78 [19.8]
UT-T-TC06-TC11-TC07-o	6mm	3/8"	1/4"	1.52 [38.6]	1.29 [32.8]	1.29 [32.8]	0.78 [19.8]	0.78 [19.8]	0.78 [19.8]
UT-T-TC06-TC11-TC10-o	6mm	3/8"	10mm	1.52 [38.6]	1.29 [32.8]	1.45 [36.8]	0.78 [19.8]	0.78 [19.8]	0.78 [19.8]
UT-T-TC06-TC11-TC11-o	6mm	3/8"	3/8"	1.52 [38.6]	1.29 [32.8]	1.45 [36.8]	0.78 [19.8]	0.78 [19.8]	0.78 [19.8]
UT-T-TC06-TC11-TC12-o	6mm	3/8"	12mm	1.52 [38.6]	1.29 [32.8]	1.55 [39.4]	0.78 [19.8]	0.78 [19.8]	0.88 [22.4]
UT-T-TC06-TC11-TC13-o	6mm	3/8"	1/2"	1.52 [38.6]	1.29 [32.8]	1.55 [39.4]	0.78 [19.8]	0.78 [19.8]	0.88 [22.4]
UT-T-TC06-TC12-TC06-o	6mm	12mm	6mm	1.63 [41.4]	1.29 [32.8]	1.29 [32.8]	0.78 [19.8]	0.88 [22.4]	0.78 [19.8]
UT-T-TC06-TC12-TC07-o	6mm	12mm	1/4"	1.63 [41.4]	1.29 [32.8]	1.29 [32.8]	0.78 [19.8]	0.88 [22.4]	0.78 [19.8]
UT-T-TC06-TC12-TC10-o	6mm	12mm	10mm	1.63 [41.4]	1.29 [32.8]	1.45 [36.8]	0.78 [19.8]	0.88 [22.4]	0.78 [19.8]
UT-T-TC06-TC12-TC11-o	6mm	12mm	3/8"	1.63 [41.4]	1.29 [32.8]	1.45 [36.8]	0.78 [19.8]	0.88 [22.4]	0.78 [19.8]
UT-T-TC06-TC12-TC12-o	6mm	12mm	12mm	1.63 [41.4]	1.29 [32.8]	1.55 [39.4]	0.78 [19.8]	0.88 [22.4]	0.88 [22.4]
UT-T-TC06-TC12-TC13-o	6mm	12mm	1/2"	1.63 [41.4]	1.29 [32.8]	1.55 [39.4]	0.78 [19.8]	0.88 [22.4]	0.88 [22.4]
UT-T-TC06-TC13-TC06-o	6mm	1/2"	6mm	1.63 [41.4]	1.29 [32.8]	1.29 [32.8]	0.78 [19.8]	0.88 [22.4]	0.78 [19.8]
UT-T-TC06-TC13-TC07-o	6mm	1/2"	1/4"	1.63 [41.4]	1.29 [32.8]	1.29 [32.8]	0.78 [19.8]	0.88 [22.4]	0.78 [19.8]
UT-T-TC06-TC13-TC10-o	6mm	1/2"	10mm	1.63 [41.4]	1.29 [32.8]	1.45 [36.8]	0.78 [19.8]	0.88 [22.4]	0.78 [19.8]
UT-T-TC06-TC13-TC11-o	6mm	1/2"	3/8"	1.63 [41.4]	1.29 [32.8]	1.45 [36.8]	0.78 [19.8]	0.88 [22.4]	0.78 [19.8]
UT-T-TC06-TC13-TC12-o	6mm	1/2"	12mm	1.63 [41.4]	1.29 [32.8]	1.55 [39.4]	0.78 [19.8]	0.88 [22.4]	0.88 [22.4]
UT-T-TC06-TC13-TC13-o	6mm	1/2"	1/2"	1.63 [41.4]	1.29 [32.8]	1.55 [39.4]	0.78 [19.8]	0.88 [22.4]	0.88 [22.4]
UT-T-TC07-TC06-TC07-o	1/4"	6mm	1/4"	1.36 [34.5]	1.29 [32.8]	1.29 [32.8]	0.78 [19.8]	0.78 [19.8]	0.78 [19.8]
UT-T-TC07-TC06-TC10-o	1/4"	6mm	10mm	1.36 [34.5]	1.29 [32.8]	1.45 [36.8]	0.78 [19.8]	0.78 [19.8]	0.78 [19.8]
UT-T-TC07-TC06-TC11-o	1/4"	6mm	3/8"	1.36 [34.5]	1.29 [32.8]	1.45 [36.8]	0.78 [19.8]	0.78 [19.8]	0.78 [19.8]
UT-T-TC07-TC06-TC12-o	1/4"	6mm	12mm	1.36 [34.5]	1.29 [32.8]	1.55 [39.4]	0.78 [19.8]	0.78 [19.8]	0.88 [22.4]
UT-T-TC07-TC06-TC13-o	1/4"	6mm	1/2"	1.36 [34.5]	1.29 [32.8]	1.55 [39.4]	0.78 [19.8]	0.78 [19.8]	0.88 [22.4]
UT-T-TC07-TC07-TC07-o	1/4"	1/4"	1/4"	1.36 [34.5]	1.29 [32.8]	1.29 [32.8]	0.78 [19.8]	0.78 [19.8]	0.78 [19.8]
UT-T-TC07-TC07-TC10-o	1/4"	1/4"	10mm	1.36 [34.5]	1.29 [32.8]	1.45 [36.8]	0.78 [19.8]	0.78 [19.8]	0.78 [19.8]
UT-T-TC07-TC07-TC11-o	1/4"	1/4"	3/8"	1.36 [34.5]	1.29 [32.8]	1.45 [36.8]	0.78 [19.8]	0.78 [19.8]	0.78 [19.8]
UT-T-TC07-TC07-TC12-o	1/4"	1/4"	12mm	1.36 [34.5]	1.29 [32.8]	1.55 [39.4]	0.78 [19.8]	0.78 [19.8]	0.88 [22.4]
UT-T-TC07-TC07-TC13-o	1/4"	1/4"	1/2"	1.36 [34.5]	1.29 [32.8]	1.55 [39.4]	0.78 [19.8]	0.78 [19.8]	0.88 [22.4]
UT-T-TC07-TC10-TC07-o	1/4"	10mm	1/4"	1.52 [38.6]	1.29 [32.8]	1.29 [32.8]	0.78 [19.8]	0.78 [19.8]	0.78 [19.8]
UT-T-TC07-TC10-TC10-o	1/4"	10mm	10mm	1.52 [38.6]	1.29 [32.8]	1.45 [36.8]	0.78 [19.8]	0.78 [19.8]	0.78 [19.8]
UT-T-TC07-TC10-TC11-o	1/4"	10mm	3/8"	1.52 [38.6]	1.29 [32.8]	1.45 [36.8]	0.78 [19.8]	0.78 [19.8]	0.78 [19.8]
UT-T-TC07-TC10-TC12-o	1/4"	10mm	12mm	1.52 [38.6]	1.29 [32.8]	1.55 [39.4]	0.78 [19.8]	0.78 [19.8]	0.88 [22.4]
UT-T-TC07-TC10-TC13-o	1/4"	10mm	1/2"	1.52 [38.6]	1.29 [32.8]	1.55 [39.4]	0.78 [19.8]	0.78 [19.8]	0.88 [22.4]
UT-T-TC07-TC11-TC07-o	1/4"	3/8"	1/4"	1.52 [38.6]	1.29 [32.8]	1.29 [32.8]	0.78 [19.8]	0.78 [19.8]	0.78 [19.8]
UT-T-TC07-TC11-TC10-o	1/4"	3/8"	10mm	1.52 [38.6]	1.29 [32.8]	1.45 [36.8]	0.78 [19.8]	0.78 [19.8]	0.78 [19.8]

Union Tee Assemblies



Model Number	Tubing O.D. / Thread in[mm]			Length in[mm]			Diameter in[mm]		
	A	B	E	L1	L2	L3	D1	D2	D3
UT-T-TC07-TC11-TC11-o	1/4"	3/8"	3/8"	1.52 [38.6]	1.29 [32.8]	1.45 [36.8]	0.78 [19.8]	0.78 [19.8]	0.78 [19.8]
UT-T-TC07-TC11-TC12-o	1/4"	3/8"	12mm	1.52 [38.6]	1.29 [32.8]	1.55 [39.4]	0.78 [19.8]	0.78 [19.8]	0.88 [22.4]
UT-T-TC07-TC11-TC13-o	1/4"	3/8"	1/2"	1.52 [38.6]	1.29 [32.8]	1.55 [39.4]	0.78 [19.8]	0.78 [19.8]	0.88 [22.4]
UT-T-TC07-TC12-TC07-o	1/4"	12mm	1/4"	1.63 [41.4]	1.29 [32.8]	1.29 [32.8]	0.78 [19.8]	0.88 [22.4]	0.78 [19.8]
UT-T-TC07-TC12-TC10-o	1/4"	12mm	10mm	1.63 [41.4]	1.29 [32.8]	1.45 [36.8]	0.78 [19.8]	0.88 [22.4]	0.78 [19.8]
UT-T-TC07-TC12-TC11-o	1/4"	12mm	3/8"	1.63 [41.4]	1.29 [32.8]	1.45 [36.8]	0.78 [19.8]	0.88 [22.4]	0.78 [19.8]
UT-T-TC07-TC12-TC12-o	1/4"	12mm	12mm	1.63 [41.4]	1.29 [32.8]	1.55 [39.4]	0.78 [19.8]	0.88 [22.4]	0.88 [22.4]
UT-T-TC07-TC12-TC13-o	1/4"	12mm	1/2"	1.63 [41.4]	1.29 [32.8]	1.55 [39.4]	0.78 [19.8]	0.88 [22.4]	0.88 [22.4]
UT-T-TC07-TC13-TC07-o	1/4"	1/2"	1/4"	1.63 [41.4]	1.29 [32.8]	1.29 [32.8]	0.78 [19.8]	0.88 [22.4]	0.78 [19.8]
UT-T-TC07-TC13-TC10-o	1/4"	1/2"	10mm	1.63 [41.4]	1.29 [32.8]	1.45 [36.8]	0.78 [19.8]	0.88 [22.4]	0.78 [19.8]
UT-T-TC07-TC13-TC11-o	1/4"	1/2"	3/8"	1.63 [41.4]	1.29 [32.8]	1.45 [36.8]	0.78 [19.8]	0.88 [22.4]	0.78 [19.8]
UT-T-TC07-TC13-TC12-o	1/4"	1/2"	12mm	1.63 [41.4]	1.29 [32.8]	1.55 [39.4]	0.78 [19.8]	0.88 [22.4]	0.88 [22.4]
UT-T-TC07-TC13-TC13-o	1/4"	1/2"	1/2"	1.63 [41.4]	1.29 [32.8]	1.55 [39.4]	0.78 [19.8]	0.88 [22.4]	0.88 [22.4]
UT-T-TC10-TC06-TC10-o	10mm	6mm	10mm	1.36 [34.5]	1.45 [36.8]	1.45 [36.8]	0.78 [19.8]	0.78 [19.8]	0.78 [19.8]
UT-T-TC10-TC06-TC11-o	10mm	6mm	3/8"	1.36 [34.5]	1.45 [36.8]	1.45 [36.8]	0.78 [19.8]	0.78 [19.8]	0.78 [19.8]
UT-T-TC10-TC06-TC12-o	10mm	6mm	12mm	1.36 [34.5]	1.45 [36.8]	1.55 [39.4]	0.78 [19.8]	0.78 [19.8]	0.88 [22.4]
UT-T-TC10-TC06-TC13-o	10mm	6mm	1/2"	1.36 [34.5]	1.45 [36.8]	1.55 [39.4]	0.78 [19.8]	0.78 [19.8]	0.88 [22.4]
UT-T-TC10-TC07-TC10-o	10mm	1/4"	10mm	1.36 [34.5]	1.45 [36.8]	1.45 [36.8]	0.78 [19.8]	0.78 [19.8]	0.78 [19.8]
UT-T-TC10-TC07-TC11-o	10mm	1/4"	3/8"	1.36 [34.5]	1.45 [36.8]	1.45 [36.8]	0.78 [19.8]	0.78 [19.8]	0.78 [19.8]
UT-T-TC10-TC07-TC12-o	10mm	1/4"	12mm	1.36 [34.5]	1.45 [36.8]	1.55 [39.4]	0.78 [19.8]	0.78 [19.8]	0.88 [22.4]
UT-T-TC10-TC07-TC13-o	10mm	1/4"	1/2"	1.36 [34.5]	1.45 [36.8]	1.55 [39.4]	0.78 [19.8]	0.78 [19.8]	0.88 [22.4]
UT-T-TC10-TC10-TC10-o	10mm	10mm	10mm	1.52 [38.6]	1.45 [36.8]	1.45 [36.8]	0.78 [19.8]	0.78 [19.8]	0.78 [19.8]
UT-T-TC10-TC10-TC11-o	10mm	10mm	3/8"	1.52 [38.6]	1.45 [36.8]	1.45 [36.8]	0.78 [19.8]	0.78 [19.8]	0.78 [19.8]
UT-T-TC10-TC10-TC12-o	10mm	10mm	12mm	1.52 [38.6]	1.45 [36.8]	1.55 [39.4]	0.78 [19.8]	0.78 [19.8]	0.88 [22.4]
UT-T-TC10-TC10-TC13-o	10mm	10mm	1/2"	1.52 [38.6]	1.45 [36.8]	1.55 [39.4]	0.78 [19.8]	0.78 [19.8]	0.88 [22.4]
UT-T-TC10-TC11-TC10-o	10mm	3/8"	10mm	1.52 [38.6]	1.45 [36.8]	1.45 [36.8]	0.78 [19.8]	0.78 [19.8]	0.78 [19.8]
UT-T-TC10-TC11-TC11-o	10mm	3/8"	3/8"	1.52 [38.6]	1.45 [36.8]	1.45 [36.8]	0.78 [19.8]	0.78 [19.8]	0.78 [19.8]
UT-T-TC10-TC11-TC12-o	10mm	3/8"	12mm	1.52 [38.6]	1.45 [36.8]	1.55 [39.4]	0.78 [19.8]	0.78 [19.8]	0.88 [22.4]
UT-T-TC10-TC11-TC13-o	10mm	3/8"	1/2"	1.52 [38.6]	1.45 [36.8]	1.55 [39.4]	0.78 [19.8]	0.78 [19.8]	0.88 [22.4]
UT-T-TC10-TC12-TC10-o	10mm	12mm	10mm	1.63 [41.4]	1.45 [36.8]	1.45 [36.8]	0.78 [19.8]	0.88 [22.4]	0.78 [19.8]
UT-T-TC10-TC12-TC11-o	10mm	12mm	3/8"	1.63 [41.4]	1.45 [36.8]	1.45 [36.8]	0.78 [19.8]	0.88 [22.4]	0.78 [19.8]
UT-T-TC10-TC12-TC12-o	10mm	12mm	12mm	1.63 [41.4]	1.45 [36.8]	1.55 [39.4]	0.78 [19.8]	0.88 [22.4]	0.88 [22.4]
UT-T-TC10-TC12-TC13-o	10mm	12mm	1/2"	1.63 [41.4]	1.45 [36.8]	1.55 [39.4]	0.78 [19.8]	0.88 [22.4]	0.88 [22.4]
UT-T-TC10-TC13-TC10-o	10mm	1/2"	10mm	1.63 [41.4]	1.45 [36.8]	1.45 [36.8]	0.78 [19.8]	0.88 [22.4]	0.78 [19.8]
UT-T-TC10-TC13-TC11-o	10mm	1/2"	3/8"	1.63 [41.4]	1.45 [36.8]	1.45 [36.8]	0.78 [19.8]	0.88 [22.4]	0.78 [19.8]
UT-T-TC10-TC13-TC12-o	10mm	1/2"	12mm	1.63 [41.4]	1.45 [36.8]	1.55 [39.4]	0.78 [19.8]	0.88 [22.4]	0.88 [22.4]
UT-T-TC10-TC13-TC13-o	10mm	1/2"	1/2"	1.63 [41.4]	1.45 [36.8]	1.55 [39.4]	0.78 [19.8]	0.88 [22.4]	0.88 [22.4]
UT-T-TC11-TC06-TC11-o	3/8"	6mm	3/8"	1.36 [34.5]	1.45 [36.8]	1.45 [36.8]	0.78 [19.8]	0.78 [19.8]	0.78 [19.8]
UT-T-TC11-TC06-TC12-o	3/8"	6mm	12mm	1.36 [34.5]	1.45 [36.8]	1.55 [39.4]	0.78 [19.8]	0.78 [19.8]	0.88 [22.4]
UT-T-TC11-TC06-TC13-o	3/8"	6mm	1/2"	1.36 [34.5]	1.45 [36.8]	1.55 [39.4]	0.78 [19.8]	0.78 [19.8]	0.88 [22.4]
UT-T-TC11-TC07-TC11-o	3/8"	1/4"	3/8"	1.36 [34.5]	1.45 [36.8]	1.45 [36.8]	0.78 [19.8]	0.78 [19.8]	0.78 [19.8]
UT-T-TC11-TC07-TC12-o	3/8"	1/4"	12mm	1.36 [34.5]	1.45 [36.8]	1.55 [39.4]	0.78 [19.8]	0.78 [19.8]	0.88 [22.4]
UT-T-TC11-TC07-TC13-o	3/8"	1/4"	1/2"	1.36 [34.5]	1.45 [36.8]	1.55 [39.4]	0.78 [19.8]	0.78 [19.8]	0.88 [22.4]
UT-T-TC11-TC10-TC11-o	3/8"	10mm	3/8"	1.52 [38.6]	1.45 [36.8]	1.45 [36.8]	0.78 [19.8]	0.78 [19.8]	0.78 [19.8]
UT-T-TC11-TC10-TC12-o	3/8"	10mm	12mm	1.52 [38.6]	1.45 [36.8]	1.55 [39.4]	0.78 [19.8]	0.78 [19.8]	0.88 [22.4]
UT-T-TC11-TC10-TC13-o	3/8"	10mm	1/2"	1.52 [38.6]	1.45 [36.8]	1.55 [39.4]	0.78 [19.8]	0.78 [19.8]	0.88 [22.4]
UT-T-TC11-TC11-TC11-o	3/8"	3/8"	3/8"	1.52 [38.6]	1.45 [36.8]	1.45 [36.8]	0.78 [19.8]	0.78 [19.8]	0.78 [19.8]
UT-T-TC11-TC11-TC12-o	3/8"	3/8"	12mm	1.52 [38.6]	1.45 [36.8]	1.55 [39.4]	0.78 [19.8]	0.78 [19.8]	0.88 [22.4]
UT-T-TC11-TC11-TC13-o	3/8"	3/8"	1/2"	1.52 [38.6]	1.45 [36.8]	1.55 [39.4]	0.78 [19.8]	0.78 [19.8]	0.88 [22.4]
UT-T-TC11-TC12-TC11-o	3/8"	12mm	3/8"	1.63 [41.4]	1.45 [36.8]	1.45 [36.8]	0.78 [19.8]	0.88 [22.4]	0.78 [19.8]
UT-T-TC11-TC12-TC12-o	3/8"	12mm	12mm	1.63 [41.4]	1.45 [36.8]	1.55 [39.4]	0.78 [19.8]	0.88 [22.4]	0.88 [22.4]
UT-T-TC11-TC12-TC13-o	3/8"	12mm	1/2"	1.63 [41.4]	1.45 [36.8]	1.55 [39.4]	0.78 [19.8]	0.88 [22.4]	0.88 [22.4]
UT-T-TC11-TC13-TC11-o	3/8"	1/2"	3/8"	1.63 [41.4]	1.45 [36.8]	1.45 [36.8]	0.78 [19.8]	0.88 [22.4]	0.78 [19.8]

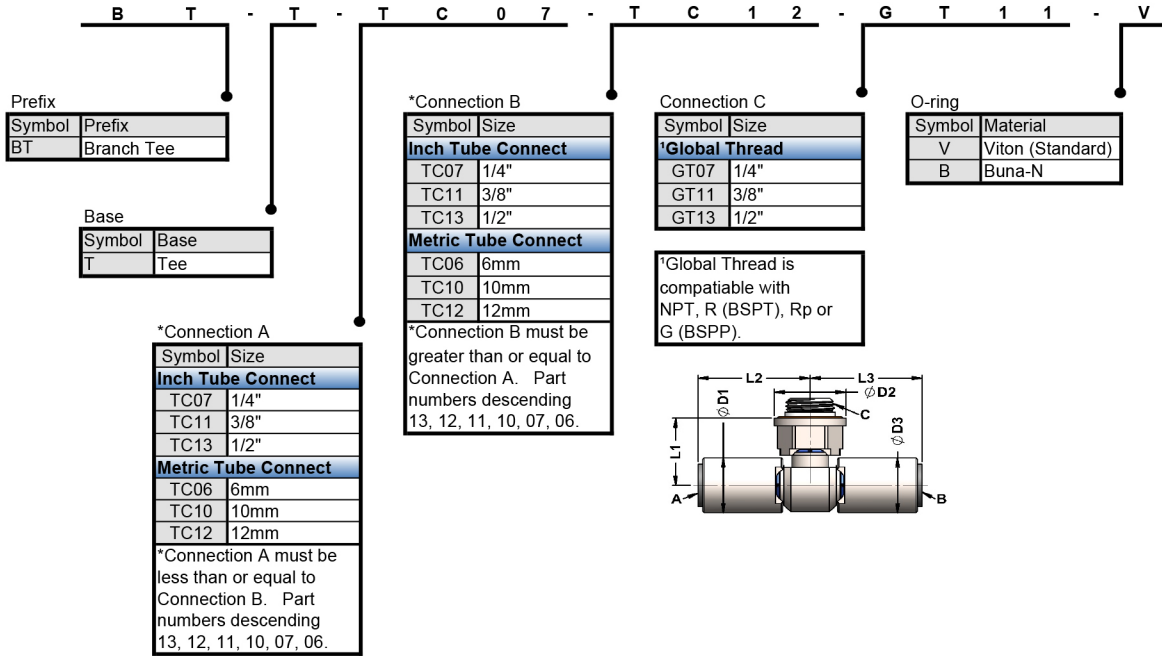
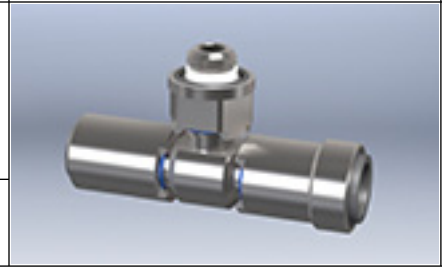
Union Tee Assemblies



Model Number	Tubing O.D. / Thread in[mm]			Length in[mm]			Diameter in[mm]		
	A	B	E	L1	L2	L3	D1	D2	D3
o = Viton,B=Buna-N									
UT-T-TC11-TC13-TC12-o	3/8"	1/2"	12mm	1.63 [41.4]	1.45 [36.8]	1.55 [39.4]	0.78 [19.8]	0.88 [22.4]	0.88 [22.4]
UT-T-TC11-TC13-TC13-o	3/8"	1/2"	1/2"	1.63 [41.4]	1.45 [36.8]	1.55 [39.4]	0.78 [19.8]	0.88 [22.4]	0.88 [22.4]
UT-T-TC12-TC06-TC12-o	12mm	6mm	12mm	1.36 [34.5]	1.55 [39.4]	1.55 [39.4]	0.88 [22.4]	0.78 [19.8]	0.88 [22.4]
UT-T-TC12-TC06-TC13-o	12mm	6mm	1/2"	1.36 [34.5]	1.55 [39.4]	1.55 [39.4]	0.88 [22.4]	0.78 [19.8]	0.88 [22.4]
UT-T-TC12-TC07-TC12-o	12mm	1/4"	12mm	1.36 [34.5]	1.55 [39.4]	1.55 [39.4]	0.88 [22.4]	0.78 [19.8]	0.88 [22.4]
UT-T-TC12-TC07-TC13-o	12mm	1/4"	1/2"	1.36 [34.5]	1.55 [39.4]	1.55 [39.4]	0.88 [22.4]	0.78 [19.8]	0.88 [22.4]
UT-T-TC12-TC10-TC12-o	12mm	10mm	12mm	1.52 [38.6]	1.55 [39.4]	1.55 [39.4]	0.88 [22.4]	0.78 [19.8]	0.88 [22.4]
UT-T-TC12-TC10-TC13-o	12mm	10mm	1/2"	1.52 [38.6]	1.55 [39.4]	1.55 [39.4]	0.88 [22.4]	0.78 [19.8]	0.88 [22.4]
UT-T-TC12-TC11-TC12-o	12mm	3/8"	12mm	1.52 [38.6]	1.55 [39.4]	1.55 [39.4]	0.88 [22.4]	0.78 [19.8]	0.88 [22.4]
UT-T-TC12-TC11-TC13-o	12mm	3/8"	1/2"	1.52 [38.6]	1.55 [39.4]	1.55 [39.4]	0.88 [22.4]	0.78 [19.8]	0.88 [22.4]
UT-T-TC12-TC12-TC12-o	12mm	12mm	12mm	1.63 [41.4]	1.55 [39.4]	1.55 [39.4]	0.88 [22.4]	0.88 [22.4]	0.88 [22.4]
UT-T-TC12-TC12-TC13-o	12mm	12mm	1/2"	1.63 [41.4]	1.55 [39.4]	1.55 [39.4]	0.88 [22.4]	0.88 [22.4]	0.88 [22.4]
UT-T-TC12-TC13-TC12-o	12mm	1/2"	12mm	1.63 [41.4]	1.55 [39.4]	1.55 [39.4]	0.88 [22.4]	0.88 [22.4]	0.88 [22.4]
UT-T-TC12-TC13-TC13-o	12mm	1/2"	1/2"	1.63 [41.4]	1.55 [39.4]	1.55 [39.4]	0.88 [22.4]	0.88 [22.4]	0.88 [22.4]
UT-T-TC13-TC06-TC13-o	1/2"	6mm	1/2"	1.36 [34.5]	1.55 [39.4]	1.55 [39.4]	0.88 [22.4]	0.78 [19.8]	0.88 [22.4]
UT-T-TC13-TC07-TC13-o	1/2"	1/4"	1/2"	1.36 [34.5]	1.55 [39.4]	1.55 [39.4]	0.88 [22.4]	0.78 [19.8]	0.88 [22.4]
UT-T-TC13-TC10-TC13-o	1/2"	10mm	1/2"	1.52 [38.6]	1.55 [39.4]	1.55 [39.4]	0.88 [22.4]	0.78 [19.8]	0.88 [22.4]
UT-T-TC13-TC11-TC13-o	1/2"	3/8"	1/2"	1.52 [38.6]	1.55 [39.4]	1.55 [39.4]	0.88 [22.4]	0.78 [19.8]	0.88 [22.4]
UT-T-TC13-TC12-TC13-o	1/2"	12mm	1/2"	1.63 [41.4]	1.55 [39.4]	1.55 [39.4]	0.88 [22.4]	0.88 [22.4]	0.88 [22.4]
UT-T-TC13-TC13-TC13-o	1/2"	1/2"	1/2"	1.63 [41.4]	1.55 [39.4]	1.55 [39.4]	0.88 [22.4]	0.88 [22.4]	0.88 [22.4]

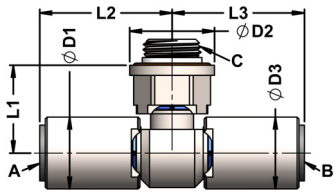
How To Order

ENGLISH & METRIC SIZE BRANCH TEE, SS



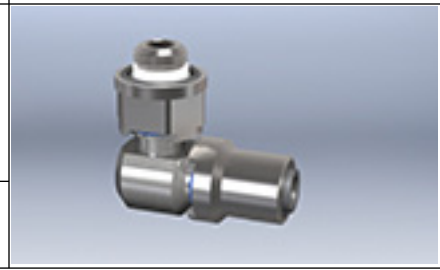
Industrial Fittings For
A Changing World

Branch Tee Assemblies

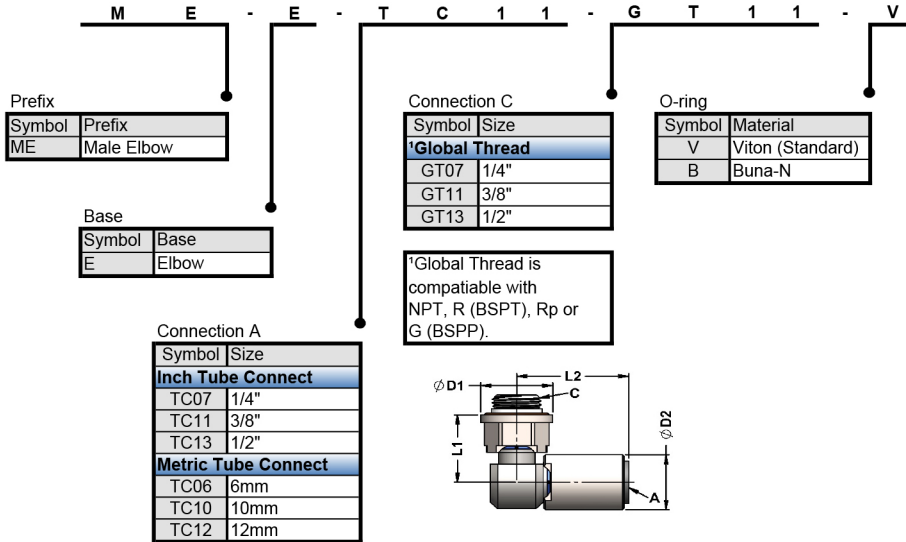


Model Number	Tubing O.D. / Thread in[mm]			Length in[mm]			Diameter in[mm]		
	A	B	C	L1	L2	L3	D1	D2	D3
BT-T-TC06-TC06-GT07-o	6mm	6mm	1/4	0.96 [24.4]	1.29 [32.8]	1.29 [32.8]	0.78 [19.8]	0.84 [21.3]	0.78 [19.8]
BT-T-TC06-TC07-GT07-o	6mm	1/4"	1/4	0.96 [24.4]	1.29 [32.8]	1.29 [32.8]	0.78 [19.8]	0.93 [23.6]	0.78 [19.8]
BT-T-TC06-TC10-GT07o	6mm	10mm	1/4	0.96 [24.4]	1.29 [32.8]	1.29 [32.8]	0.78 [19.8]	1.14 [29.0]	0.78 [19.8]
BT-T-TC06-TC11-GT07-o	6mm	3/8"	1/4	0.96 [24.4]	1.29 [32.8]	1.29 [32.8]	0.78 [19.8]	0.84 [21.3]	0.78 [19.8]
BT-T-TC06-TC12-GT07-o	6mm	12mm	1/4	0.96 [24.4]	1.29 [32.8]	1.29 [32.8]	0.78 [19.8]	0.93 [23.6]	0.78 [19.8]
BT-T-TC06-TC13-GT07-o	6mm	1/2"	1/4	0.96 [24.4]	1.29 [32.8]	1.29 [32.8]	0.78 [19.8]	1.14 [29.0]	0.78 [19.8]
BT-T-TC06-TC06-GT11-o	6mm	6mm	3/8	0.96 [24.4]	1.29 [32.8]	1.45 [36.8]	0.78 [19.8]	0.84 [21.3]	0.78 [19.8]
BT-T-TC06-TC07-GT11-o	6mm	1/4"	3/8	0.96 [24.4]	1.29 [32.8]	1.45 [36.8]	0.78 [19.8]	0.93 [23.6]	0.78 [19.8]
BT-T-TC06-TC10-GT11-o	6mm	10mm	3/8	0.96 [24.4]	1.29 [32.8]	1.45 [36.8]	0.78 [19.8]	1.14 [29.0]	0.78 [19.8]
BT-T-TC06-TC11-GT11-o	6mm	3/8"	3/8	0.96 [24.4]	1.29 [32.8]	1.45 [36.8]	0.78 [19.8]	0.84 [21.3]	0.78 [19.8]
BT-T-TC06-TC12-GT11-o	6mm	12mm	3/8	0.96 [24.4]	1.29 [32.8]	1.45 [36.8]	0.78 [19.8]	0.93 [23.6]	0.78 [19.8]
BT-T-TC06-TC13-GT11-o	6mm	1/2"	3/8	0.96 [24.4]	1.29 [32.8]	1.45 [36.8]	0.78 [19.8]	1.14 [29.0]	0.78 [19.8]
BT-T-TC06-TC06-GT13-o	6mm	6mm	1/2	0.96 [24.4]	1.29 [32.8]	1.55 [39.4]	0.78 [19.8]	0.84 [21.3]	0.88 [22.4]
BT-T-TC06-TC07-GT13-o	6mm	1/4"	1/2	0.96 [24.4]	1.29 [32.8]	1.55 [39.4]	0.78 [19.8]	0.93 [23.6]	0.88 [22.4]
BT-T-TC06-TC10-GT13o	6mm	10mm	1/2	0.96 [24.4]	1.29 [32.8]	1.55 [39.4]	0.78 [19.8]	1.14 [29.0]	0.88 [22.4]
BT-T-TC06-TC11-GT13-o	6mm	3/8"	1/2	0.96 [24.4]	1.29 [32.8]	1.55 [39.4]	0.78 [19.8]	0.84 [21.3]	0.88 [22.4]
BT-T-TC06-TC12-GT13-o	6mm	12mm	1/2	0.96 [24.4]	1.29 [32.8]	1.55 [39.4]	0.78 [19.8]	0.93 [23.6]	0.88 [22.4]
BT-T-TC06-TC13-GT13-o	6mm	1/2"	1/2	0.96 [24.4]	1.29 [32.8]	1.55 [39.4]	0.78 [19.8]	1.14 [29.0]	0.88 [22.4]
BT-T-TC07-TC07-GT07-o	1/4"	1/4"	1/4	0.96 [24.4]	1.29 [32.8]	1.29 [32.8]	0.78 [19.8]	0.84 [21.3]	0.78 [19.8]
BT-T-TC07-TC10-GT07-o	1/4"	10mm	1/4	0.96 [24.4]	1.29 [32.8]	1.29 [32.8]	0.78 [19.8]	0.93 [23.6]	0.78 [19.8]
BT-T-TC07-TC11-GT07-o	1/4"	3/8"	1/4	0.96 [24.4]	1.29 [32.8]	1.29 [32.8]	0.78 [19.8]	1.14 [29.0]	0.78 [19.8]
BT-T-TC07-TC12-GT07-o	1/4"	12mm	1/4	0.96 [24.4]	1.29 [32.8]	1.45 [36.8]	0.78 [19.8]	0.84 [21.3]	0.78 [19.8]
BT-T-TC07-TC13-GT07o	1/4"	1/2"	1/4	0.96 [24.4]	1.29 [32.8]	1.45 [36.8]	0.78 [19.8]	0.93 [23.6]	0.78 [19.8]
BT-T-TC07-TC07-GT11-o	1/4"	1/4"	3/8	0.96 [24.4]	1.29 [32.8]	1.45 [36.8]	0.78 [19.8]	1.14 [29.0]	0.78 [19.8]
BT-T-TC07-TC10-GT11-o	1/4"	10mm	3/8	0.96 [24.4]	1.29 [32.8]	1.45 [36.8]	0.78 [19.8]	0.84 [21.3]	0.78 [19.8]
BT-T-TC07-TC11-GT11o	1/4"	3/8"	3/8	0.96 [24.4]	1.29 [32.8]	1.45 [36.8]	0.78 [19.8]	0.93 [23.6]	0.78 [19.8]
BT-T-TC07-TC12-GT11-o	1/4"	12mm	3/8	0.96 [24.4]	1.29 [32.8]	1.45 [36.8]	0.78 [19.8]	1.14 [29.0]	0.78 [19.8]
BT-T-TC07-TC13-GT11-o	1/4"	1/2"	3/8	0.96 [24.4]	1.29 [32.8]	1.55 [39.4]	0.78 [19.8]	0.84 [21.3]	0.88 [22.4]
BT-T-TC07-TC07-GT13-o	1/4"	1/4"	1/2	0.96 [24.4]	1.29 [32.8]	1.55 [39.4]	0.78 [19.8]	0.93 [23.6]	0.88 [22.4]
BT-T-TC07-TC10-GT13-o	1/4"	10mm	1/2	0.96 [24.4]	1.29 [32.8]	1.55 [39.4]	0.78 [19.8]	1.14 [29.0]	0.88 [22.4]
BT-T-TC07-TC11-GT13-o	1/4"	3/8"	1/2	0.96 [24.4]	1.29 [32.8]	1.55 [39.4]	0.78 [19.8]	0.84 [21.3]	0.88 [22.4]
BT-T-TC07-TC12-GT13-o	1/4"	12mm	1/2	0.96 [24.4]	1.29 [32.8]	1.55 [39.4]	0.78 [19.8]	0.93 [23.6]	0.88 [22.4]
BT-T-TC07-TC13-GT13-o	1/4"	1/2"	1/2	0.96 [24.4]	1.29 [32.8]	1.55 [39.4]	0.78 [19.8]	1.14 [29.0]	0.88 [22.4]
BT-T-TC10-TC10-GT07-o	10mm	10mm	1/4	0.96 [24.4]	1.45 [36.8]	1.45 [36.8]	0.78 [19.8]	0.84 [21.3]	0.78 [19.8]
BT-T-TC10-TC11-GT07-o	10mm	3/8"	1/4	0.96 [24.4]	1.45 [36.8]	1.45 [36.8]	0.78 [19.8]	0.93 [23.6]	0.78 [19.8]
BT-T-TC10-TC12-GT07-o	10mm	12mm	1/4	0.96 [24.4]	1.45 [36.8]	1.45 [36.8]	0.78 [19.8]	1.14 [29.0]	0.78 [19.8]
BT-T-TC10-TC13-GT07-o	10mm	1/2"	1/4	0.96 [24.4]	1.45 [36.8]	1.45 [36.8]	0.78 [19.8]	0.84 [21.3]	0.78 [19.8]
BT-T-TC10-TC10-GT11o	10mm	10mm	3/8	0.96 [24.4]	1.45 [36.8]	1.45 [36.8]	0.78 [19.8]	0.93 [23.6]	0.78 [19.8]
BT-T-TC10-TC11-GT11-o	10mm	3/8"	3/8	0.96 [24.4]	1.45 [36.8]	1.45 [36.8]	0.78 [19.8]	1.14 [29.0]	0.78 [19.8]
BT-T-TC10-TC12-GT11-o	10mm	12mm	3/8	0.96 [24.4]	1.45 [36.8]	1.55 [39.4]	0.78 [19.8]	0.84 [21.3]	0.88 [22.4]
BT-T-TC10-TC13-GT11-o	10mm	1/2"	3/8	0.96 [24.4]	1.45 [36.8]	1.55 [39.4]	0.78 [19.8]	0.93 [23.6]	0.88 [22.4]
BT-T-TC10-TC10-GT13-o	10mm	10mm	1/2	0.96 [24.4]	1.45 [36.8]	1.55 [39.4]	0.78 [19.8]	1.14 [29.0]	0.88 [22.4]
BT-T-TC10-TC11-GT13-o	10mm	3/8"	1/2	0.96 [24.4]	1.45 [36.8]	1.55 [39.4]	0.78 [19.8]	0.84 [21.3]	0.88 [22.4]
BT-T-TC10-TC12-GT13-o	10mm	12mm	1/2	0.96 [24.4]	1.45 [36.8]	1.55 [39.4]	0.78 [19.8]	0.93 [23.6]	0.88 [22.4]
BT-T-TC10-TC13-GT13-o	10mm	1/2"	1/2	0.96 [24.4]	1.45 [36.8]	1.55 [39.4]	0.78 [19.8]	1.14 [29.0]	0.88 [22.4]
BT-T-TC11-TC11-GT07-o	3/8"	3/8"	1/4	0.96 [24.4]	1.45 [36.8]	1.45 [36.8]	0.78 [19.8]	0.84 [21.3]	0.78 [19.8]
BT-T-TC11-TC12-GT07-o	3/8"	12mm	1/4	0.96 [24.4]	1.45 [36.8]	1.45 [36.8]	0.78 [19.8]	0.93 [23.6]	0.78 [19.8]
BT-T-TC11-TC13-GT07-o	3/8"	1/2"	1/4	0.96 [24.4]	1.45 [36.8]	1.45 [36.8]	0.78 [19.8]	1.14 [29.0]	0.78 [19.8]
BT-T-TC11-TC11-GT11-o	3/8"	3/8"	3/8	0.96 [24.4]	1.45 [36.8]	1.55 [39.4]	0.78 [19.8]	0.84 [21.3]	0.88 [22.4]
BT-T-TC11-TC12-GT11-o	3/8"	12mm	3/8	0.96 [24.4]	1.45 [36.8]	1.55 [39.4]	0.78 [19.8]	0.93 [23.6]	0.88 [22.4]
BT-T-TC11-TC13-GT11-o	3/8"	1/2"	3/8	0.96 [24.4]	1.45 [36.8]	1.55 [39.4]	0.78 [19.8]	1.14 [29.0]	0.88 [22.4]
BT-T-TC11-TC11-GT13-o	3/8"	3/8"	1/2	0.96 [24.4]	1.45 [36.8]	1.55 [39.4]	0.78 [19.8]	0.84 [21.3]	0.88 [22.4]
BT-T-TC11-TC12-GT13-o	3/8"	12mm	1/2	0.96 [24.4]	1.45 [36.8]	1.55 [39.4]	0.78 [19.8]	0.93 [23.6]	0.88 [22.4]

How To Order



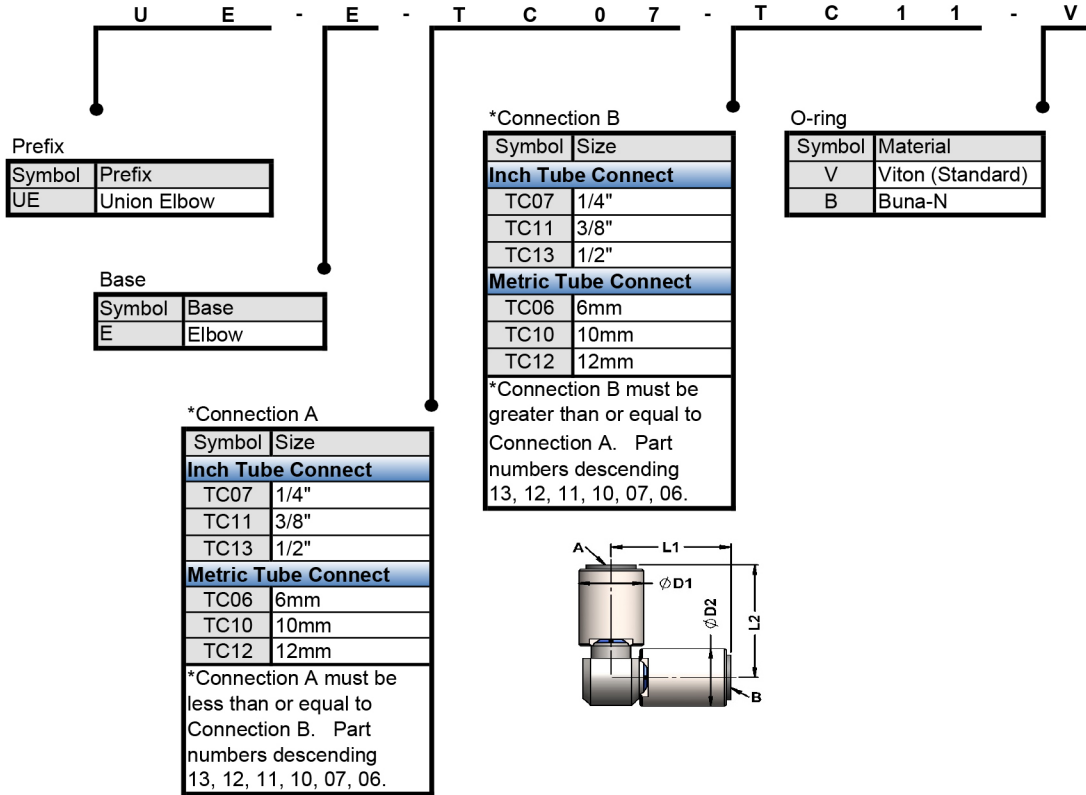
ENGLISH & METRIC SIZE MALE ELBOW, SS



Industrial Fittings For
A Changing World

How To Order

ENGLISH & METRIC SIZE UNION ELBOW, SS

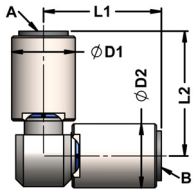


WWW.GLOBALFITTINGSINC.COM



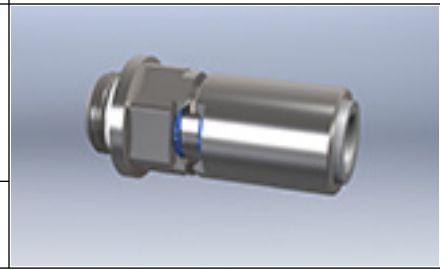
Industrial Fittings For
A Changing World

Union Elbow Assemblies

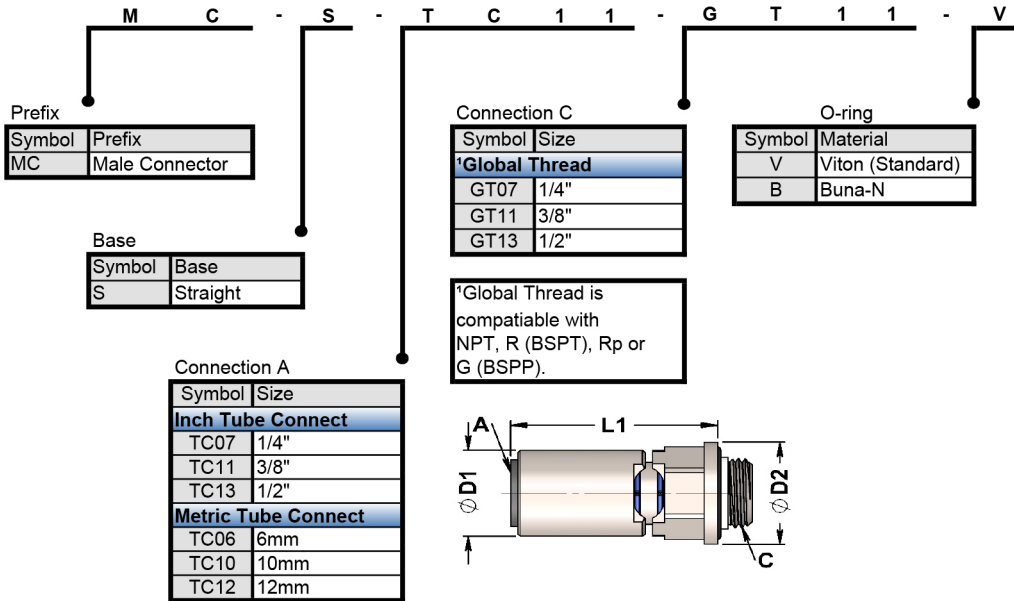


Model Number	Tubing O.D. / Thread in[mm]			Length in[mm]			Diameter in[mm]		
	A	B	-	L1	L2	L3	D1	D2	D3
o = Viton,B=Buna-N			-						
UE-E-TC06-TC06-o	6mm	6mm	-	1.29 [32.8]	1.36 [34.5]	-	0.78 [19.8]	0.78 [19.8]	-
UE-E-TC06-TC07-o	6mm	1/4"	-	1.29 [32.8]	1.36 [34.5]	-	0.78 [19.8]	0.78 [19.8]	-
UE-E-TC06-TC10-o	6mm	10mm	-	1.45 [36.8]	1.36 [34.5]	-	0.78 [19.8]	0.78 [19.8]	-
UE-E-TC06-TC11-o	6mm	3/8"	-	1.45 [36.8]	1.36 [34.5]	-	0.78 [19.8]	0.78 [19.8]	-
UE-E-TC06-TC12-o	6mm	12mm	-	1.55 [39.4]	1.36 [34.5]	-	0.78 [19.8]	0.88 [22.4]	-
UE-E-TC06-TC13-o	6mm	1/2"	-	1.55 [39.4]	1.36 [34.5]	-	0.78 [19.8]	0.88 [22.4]	-
UE-E-TC07-TC07o	1/4"	1/4"	-	1.29 [32.8]	1.36 [34.5]	-	0.78 [19.8]	0.78 [19.8]	-
UE-E-TC07-TC10-o	1/4"	10mm	-	1.45 [36.8]	1.36 [34.5]	-	0.78 [19.8]	0.78 [19.8]	-
UE-E-TC07-TC11-o	1/4"	3/8"	-	1.45 [36.8]	1.36 [34.5]	-	0.78 [19.8]	0.78 [19.8]	-
UE-E-TC07-TC12-o	1/4"	12mm	-	1.55 [39.4]	1.36 [34.5]	-	0.78 [19.8]	0.88 [22.4]	-
UE-E-TC07-TC13-o	1/4"	1/2"	-	1.55 [39.4]	1.36 [34.5]	-	0.78 [19.8]	0.88 [22.4]	-
UE-E-TC10-TC10-o	10mm	10mm	-	1.45 [36.8]	1.52 [38.6]	-	0.78 [19.8]	0.78 [19.8]	-
UE-E-TC10-TC11-o	10mm	3/8"	-	1.45 [36.8]	1.52 [38.6]	-	0.78 [19.8]	0.78 [19.8]	-
UE-E-TC10-TC12-o	10mm	12mm	-	1.55 [39.4]	1.52 [38.6]	-	0.78 [19.8]	0.88 [22.4]	-
UE-E-TC10-TC13-o	10mm	1/2"	-	1.55 [39.4]	1.52 [38.6]	-	0.78 [19.8]	0.88 [22.4]	-
UE-E-TC11-TC11-o	3/8"	3/8"	-	1.45 [36.8]	1.52 [38.6]	-	0.78 [19.8]	0.78 [19.8]	-
UE-E-TC11-TC12-o	3/8"	12mm	-	1.55 [39.4]	1.52 [38.6]	-	0.78 [19.8]	0.88 [22.4]	-
UE-E-TC11-TC13-o	3/8"	1/2"	-	1.55 [39.4]	1.52 [38.6]	-	0.78 [19.8]	0.88 [22.4]	-
UE-E-TC12-TC12-o	12mm	12mm	-	1.55 [39.4]	1.63 [41.4]	-	0.88 [22.4]	0.88 [22.4]	-
UE-E-TC12-TC13-o	12mm	1/2"	-	1.55 [39.4]	1.63 [41.4]	-	0.88 [22.4]	0.88 [22.4]	-
UE-E-TC13-TC13-o	1/2"	1/2"	-	1.55 [39.4]	1.63 [41.4]	-	0.88 [22.4]	0.88 [22.4]	-

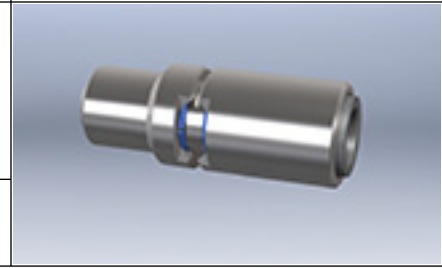
How To Order



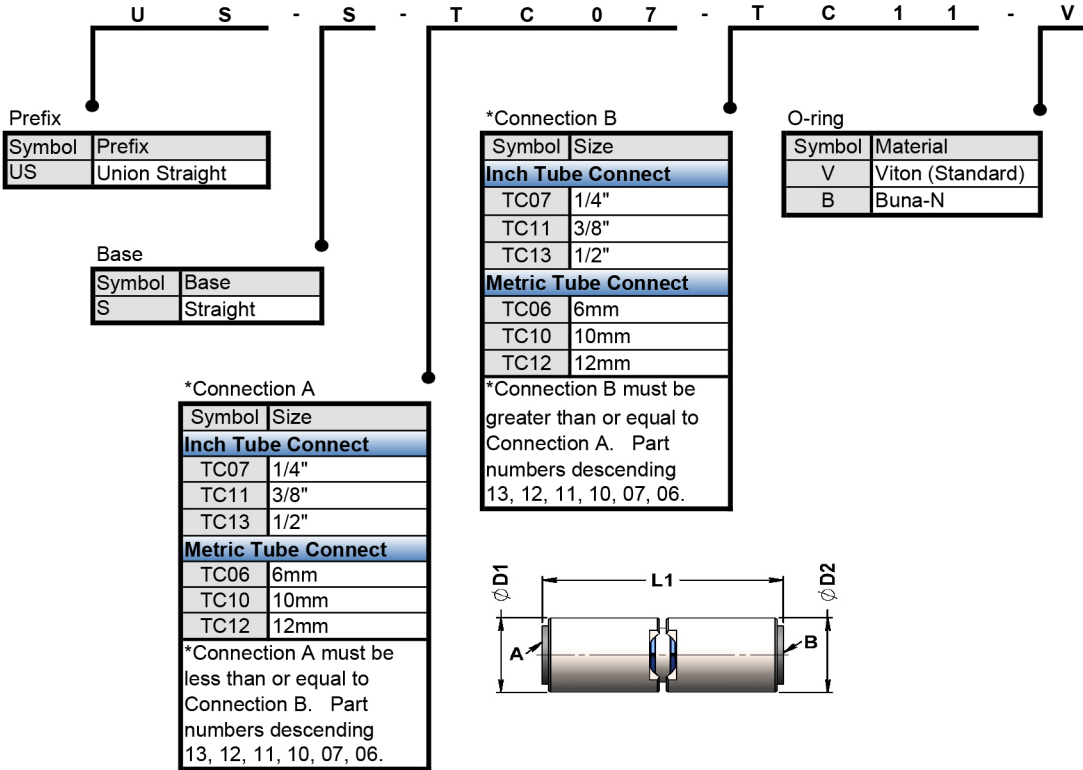
ENGLISH & METRIC SIZE MALE CONNECTOR, SS



How To Order



ENGLISH & METRIC SIZE UNION STRAIGHT, SS



Industrial Fittings For
A Changing World

SPECIFICATIONS



MATERIALS, CONNECTIONS, PRESSURE & TEMPERATURE

Materials of Construction:

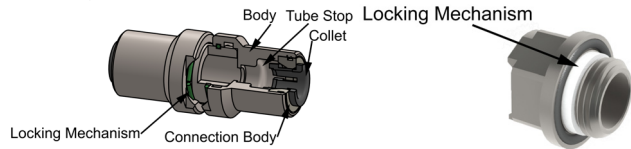
The fittings are made up of the following components:
Bodies are 316L Stainless Steel electro-polished.

All O-rings are Viton unless Buna-N is specified by the customer.

Push-Fit Connection Bodies are Gray (Inch) or Black (Metric) Acetal with Stainless Steel teeth.

Collets are Gray (Inch) or Black (Metric) Acetal copolymer with Stainless Steel teeth.

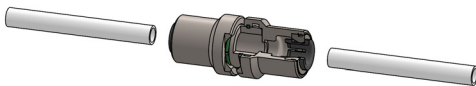
Locking Mechanisms are PVDF and PTFE.



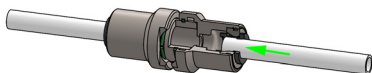
How To Make A Connection:

GFC's Tube Connect modules are simple push-fit connections. Push-fit connections are pushed in by hand. The acetal tube connection body acts as a tube support preventing the tube from becoming deformed.

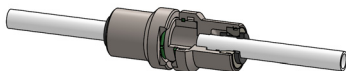
- 1 Make sure your plastic or metal tubing is cut square and free of burrs.



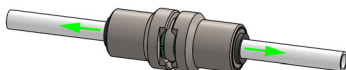
- 2 Push tubing through the connection body and into the fitting.



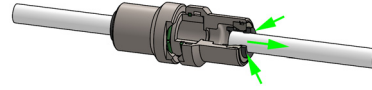
- 3 Push tubing past the O-ring until it reaches the tube stop.



- 4 Check the connection by pulling out on the tubing. The teeth of the SS collet should not allow the tubing to slip.



- 5 To remove the tubing hold the release collet down while removing the tubing. Cut damaged tubing off to reuse tubing.



Note: Do not disconnect tubing while fittings are pressurized.

Note: Do not subject connections to extreme side loads.

Note: Make sure all tubing is cut square and free of burrs.

Working Pressure & Temperature Range:

Stainless Steel electro-polished bodies are laser welded for zero-leak tolerance. Global Thread modules are sealed with Viton O-ring seals. Tube Connect modules are rated for the following pressures and temperatures:

Pressure		Temp.
1/4" 6mm	3/8"-1/2" 10mm-22mm	
Portable Liquids and Air		
230 psi / 16 bar	150 psi / 10 bar	+33°F / +1°C
230 psi / 16 bar	150 psi / 10 bar	+68°F / +20°C
150 psi / 10 bar	100 psi / 7 bar	+149°F / +65°C
Air		
230 psi / 16 bar	150 psi / 10 bar	4°F / -20°F

Also suitable for vacuum

The following tube types are compatible for use with our Tube Connect modules:

Plastic Tubing - Nylon, polyurethane, and polyethylene tubing conforming to tolerances on Page 3.

Braided Hose - Must use Tube to Hose Stems with hose clamps.

Metal Tube (soft) - Brass, copper, or mild steel conforming to tolerances on Page 3.



Industrial Fittings For
A Changing World

SPECIFICATIONS



TUBE TOLERANCES, QUALITY, TORQUE, CHEMICAL COMPATIBILITY

Tube Tolerances:

Tube Connect modules are offered for tubes with outside diameters to the following tolerances:

Size (Inches)	1/4"-1/2"
Tolerance (Inches)	+0.001 / -0.004
Size (mm)	6mm-22mm
Tolerance (mm)	+0.05 / -0.10

Food Quality:

All the fittings in this brochure are produced with FDA approved materials and are therefore suitable for food quality applications.

Torque Specifications:

All threads on Global Thread modules are designed to be universally compatible with NPT, R (BSPT), Rp or G (BSPP). The only torque required is to seat the O-ring and crush the PTFE locking mechanism.

Thread Size	Torque Value (Typical)	
	Nm	Ft-Lbs
1/4	6.8	5.0
3/8	11.3	8.3
1/2	12.4	9.2

Chemicals:

All GFC fittings are designed and tested for harsh environments. The SS electro-polished bodies and Viton O-rings ensure compatibility with the most chemicals in and outside the fittings. Solvents, Lubricants, Hydraulic Fluids, Gasolines, Agriculture Chemicals, Alcohols, Aldehydes, Esters, Ethers, Hydrocarbons (see chart on next page), Agriculture Chemicals, Many weak and weak bases, and water are all compatible with our fittings.

It is not recommended that our Tube Connect modules be exposed to strong acids, strong bases, or oxidizing agents. Thus they are not recommended for uses outside of pH range 4-9. It should also be noted the Zinc Chloride and Chlorine are not recommended for Tube Connect fittings.

GFC Global Thread module locking mechanisms are made of Teflon PTFE and are unaffected by chemical environments. The only chemicals known to affect Teflon are molten alkali metals and highly reactive fluorinating agents.

GFC O-rings in the Tube Connect modules and Global Thread modules are made of Viton. Viton is resistant to oils, aqueous media and most other fluids. The range of chemicals to which Viton is resistant is so broad that it is by far easier to list the few chemicals in which Viton will be chemically attacked or swollen.

In general, low molecular weight ketones and esters will swell a vulcanizate of Viton.

Amines affect Viton differently from the ketones and esters. Generally, amines will react with the polymer backbone and result in embrittlement of the vulcanizate. The elongation will drop off significantly and hardness will increase. Amines are just one kind of base. In general, strong bases such as sodium hydroxide at relatively high concentrations will degrade Viton.

For military applications using hydrocarbons GFC has attached a chemical compatibility chart used throughout the plastics industry on the next page.

WWW.GLOBALFITTINGSINC.COM



Industrial Fittings For
A Changing World

SPECIFICATIONS



SYNTHETIC OIL COMPATIBILITY CHART

Plastic and Elastomer Compatibility for Base Oil Families: G Good, F Fair, P Poor. Solvent Compatibility for Base Oil Families: S Soluble in large fraction, W Weakly soluble, V Varies with grade, I Insoluble.

	Plastic (see notes 1 and 4)														Elastomer (see notes 2 and 4)										Solvent (see notes 3 and 4)									
	Acetal	ABS	Phenolic	Polyamide-imide	Polyamide (nylon)	Polycarbonate	Polyester	Polyetherimide	Polyethylene	Polyimide	Polyphenylene oxide	Polystyrene	Polysulfone	PTFE	Polyvinyl chloride	Terephthalate	Buna S	Butyl	EPDM, EPR	Fluoroelastomer	Natural Rubber	Neoprene	Nitrile	Silicone	Water	Water plus detergent	Isopropanol	Methanol	Mineral Spirits	HCFC-141b	Fluoroalkane	Hydrofluorocarbon	Hydrofluoroether	Halogenated Blends
Synthetic Hydrocarbon Includes: polyalphaolefin (PAO) Viscosity Index (VI) = 125-250 Good lubricity	G	G	G	G	G	G	G	F	G	G	F	G	G	F	G	P	P	P	G	P	G	G	F	I	W	I	I	S	S	I	I	I	V	
Polyglycol a.k.a. polyether Viscosity Index (VI) = 160-220 Low \$/lb	G	P	G	G	G	P	P	G	F	G	P	G	G	P	G	P	P	G	G	P	P	G	F	V	W	V	V	S	S	I	I	I	V	
Ester Includes: diester, polyolester Viscosity Index (VI) = 120-150 Excellent lubricity, load carrying	G	P	G	G	G	P	P	G	F	G	P	P	G	P	G	P	P	F	G	P	P	F	F	I	W	I	I	S	S	I	I	I	V	
Silicone Includes: dimethyl-, phenyl-, halogenated- Viscosity Index (VI) = 200-650 Excellent (low) volatility	G	G	G	G	G	G	G	G	G	G	G	G	G	G	G	G	G	G	G	G	G	G	P	I	W	I	I	S	S	I	I	I	V	
Halocarbon Includes chlorotrifluoroethylene (CTFE) Viscosity Index (VI) = poor Chemical resist. load carrying, low temp.	G	G	G	G	G	G	G	G	G	G	G	G	G	P	G	P	P	G	P	P	G	P	P	I	W	I	I	I	S	S	S	S	S	
Fluoroether a.k.a. perfluoropolyether (PFPE) Viscosity Index (VI) = 100-350 Excellent inertness, lubricity, temp. range	G	G	G	G	G	G	G	G	G	G	G	G	G	G	G	G	G	G	G	G	G	G	G	I	W	I	I	I	S	S	V	V	V	
Polyphenylether a.k.a. PPE Viscosity Index (VI) = 40-60 Excellent lubricity, volatility, rad. resist.	G	P	G	G	G	P	P	G	F	G	P	P	G	P	G	P	P	F	G	P	P	F	F	I	W	I	I	S	W	I	I	I	V	

Note 1: For cross reference to trade names, consult Modern Plastics Encyclopedia, '97, McGraw-Hill Company, New York, 1997.
 Note 2: For cross reference to trade names, consult Blue Book 1996; Lippincott & Peto, Akron, OH, 1996.
 Note 3: Use of most organic solvents is subject to regulatory restrictions. Consult your plant safety officer for proper handling.
 Note 4: Material compatibility can vary with mfgs. grade, lubricant grade, applied temp., and strain. Test in application prior to use. Consult Nye Lubricants for more information.

WWW.GLOBALFITTINGSINC.COM



Industrial Fittings For
A Changing World

WARRANTY



WARRANTY, MAINTENANCE, PRODUCT SPECIFICATIONS

Warranty Information:

GFC has a one year warranty on all products. It is however the responsibility of the customer to ensure fittings are suitable to your application. Please ensure that the installation of fittings is done using our recommendations, and make sure to follow all codes and standards. Please refer to our Terms and Conditions of Sale on the next page.

Maintenance:

GFC recommends mandatory maintenance intervals in order to prevent downtime, damage or injury, especially in harsh environments.

Cleaning agents with a ph range of 4-9 are recommended. Do not attempt to use cleaning agents outside this ph range, or the Tube Connect connection body could become damaged.

If the PVDF locking mechanism holding the Base module and Tube Connect or Global Thread module together is missing immediately stop using the fitting and order replacement locks.

Product Selection & Installation

GFC's fittings are of the highest quality and are manufactured to the technical specifications within this product catalog. It is the customers responsibility to select, install, and maintain the fittings using these technical specifications. It is also the customers responsibility to make sure their customers receive the same product specifications.

GFC reserves the right to amend without notice the specification and design of all products illustrated in this catalog. GFC reserves the right to change the color and shape of products. Photographs are for illustrative purposes only.

Subject to our Terms and Conditions of Sale on next page.

Visit GFC Online:



<http://www.globalfittingsinc.com>

Global Fittings Concepts, Inc.

379 Cheney Highway #208
Titusville, FL, 32780
Telephone: 321-567-2583
E-mail: info@globalfittingsinc.com

Download This Brochure:



Industrial Fittings For
A Changing World

TERMS & CONDITIONS OF SALE

GLOBAL FITTINGS CONCEPTS

In these Terms and Conditions of Sale, the seller of the Products means Global Fittings Concepts (GFC) having its principal place of business at P.O. Box 1012, Titusville, FL 32781. The term "Buyer" means the party who purchases or agrees to purchase GFC Products, which include but are not limited to, modular fitting systems, collectively referred to herein as "Products." GFC and Buyer may also be referred to herein individually as a "Party" and together as the "Parties." The term "Contract" means the written contract of sale concluded between GFC and the Buyer (including such written specifications, quotations, drawings, and other documents as may be expressly incorporated into it by reference), and incorporating these terms and conditions of sale.

1. **Acceptance.** The following terms and conditions of sale ("Conditions") are the only terms and conditions upon which GFC is prepared to sell Products to Buyer and they shall govern the Contract to the entire exclusion of any and all other terms and conditions (including any terms or conditions the Buyer purports to apply under any purchase order, confirmation of order, specification, communication, or other document) except those which relate to prices, quantities, delivery schedules, and the description and specifications of the Products stated in GFC's quotation acknowledgement of an order or on GFC's invoice. GFC hereby objects to and rejects any other terms or conditions appearing on, incorporated by reference in, or attached to Buyer's purchase order(s). In case of a conflict between the Conditions and the terms and conditions contained on any purchase order or similar document, the Conditions of this document shall control. Buyer's acceptance of GFC Products called for in said purchase order(s) shall constitute its acceptance of these Conditions. Without limiting the foregoing, in the event that the quotation or acknowledgement follows the issuance of a purchase order from Buyer, or any other document of Buyer that purports to impose terms and conditions on the contemplated transaction (the "Buyer's Offer"), the document issued by GFC shall not operate as an acceptance of the Buyer's Offer and GFC's acceptance of any Buyer's Offer is expressly conditioned on Buyer's assent to all of GFC's Conditions set forth below.

2. **Prices.** The prices of Products sold by GFC to Buyer will be GFC's applicable published prices in effect at the time Buyer's purchase order is accepted by GFC, or such prices quoted by a GFC authorized representative. Written quotations expire automatically thirty (30) days from the date issued and are subject to change or termination prior to Buyer's acceptance during that period.

3. **Taxes.** All prices for Products are exclusive of, and Buyer agrees to pay any and all excise, sales, use, transfer, personal property and/or value-added tax (VAT), import duty and any and all other taxes and duties imposed by any national, federal, state, municipal or other governmental authority with respect to the Products or their sale, excepting only taxes based on GFC's income. Buyer must obtain and provide GFC any certificate of exemption or similar document required for any tax relief or exemption.

4. **Terms of Payment.** All invoices shall be paid in full on or prior to shipment unless Buyer has established and maintains open account credit with GFC, in which case payment in full shall be due thirty (30) days from date of invoice. GFC reserves the right, in its sole discretion, to require full or partial pre-payment, letters of credit, or cash on delivery and to revoke any credit previously extended. All payments must be made in the currency and to the bank or address of GFC indicated on GFC's invoice. GFC reserves the right to assess, and Buyer agrees to promptly pay, service charges of one and one-half percent (1½%) per month on overdue accounts, or the maximum amount permitted by law, whichever is lower. Undisputed amounts owed by Buyer must be paid without setoff or other withholding. A payment is considered made when received by GFC in accordance with payment instructions on its invoice. If any particular invoice is not paid when due, Buyer agrees to pay all collection costs if this account is referred outside for collection or, if suit is brought to collect this account, Buyer agrees to pay all costs and reasonable attorneys' fees, including all costs and reasonable attorneys' fees incurred on any appeal to an appellate court.

5. **Place of Delivery and Method of Tender/Risk of Loss.** All prices are FCA (Incoterms 2010) GFC's facility. Buyer agrees to pay all transportation charges incurred after the Products are delivered to the carrier and to reimburse GFC for any transit insurance or freight pre-paid for the Products by GFC. The date of delivery is the date on which the carrier collects the Products from GFC. GFC reserves the right to deliver the Products in any order and to make partial deliveries. All shipping dates are approximate only. Where Buyer furnishes special transportation instructions, any special expense is to be borne by the Buyer, including special handling, packaging and additional freight charges. When export instructions or special packing are required and have been agreed upon by the parties, any extra charges such as export duties, licenses, fees and the like shall be borne by Buyer. Title to (subject to the next sentence below), and the risk of loss of or damage to the Products or any part thereof shall pass to the Buyer upon the earlier of delivery to carrier at the point of shipment or delivery to the Buyer, and Buyer shall have the responsibility of filing any claims for loss, damage, delay or otherwise, with the carrier, insurer or other related third parties; provided, however, for international shipments from the United States, title and risk of loss of the Goods will pass to Buyer when the Goods enter international waters, airspace or cross international borders. Subject to applicable law, GFC, upon notice to Buyer, may retain title to the Product until such time as GFC receives payment in full from the Buyer.

6. **Installation / Maintenance.** Unless otherwise specified in writing on a quotation provided by an authorized representative of GFC, Buyer assumes responsibility for installation of the Products and for any required maintenance on the Products.

7. **Proprietary Rights.** GFC shall retain all rights to technical data and information, technical processes and business methods, whether patentable or not, arising out of or evolving as a result of GFC rendering engineering services (including installation) to, and designing systems and/or Products for, Buyer.

8. **Delays.** GFC is not liable for loss, damage, detention or delay due to causes beyond its reasonable control, including but not limited to, Acts of God, acts of Buyer, acts of civil or military authority, fires, strikes, floods, terrorism, epidemics, war, riot, delays in transportation, government restrictions or embargoes, or difficulties in obtaining necessary labor, materials, manufacturing facilities or transportation due to such causes. In the event of a delay due to any cause beyond GFC's control, GFC may allocate production and deliveries among its customers, the time for delivery to Buyer will be extended for a period equal to the duration of the delay, and Buyer will not be entitled to refuse delivery or otherwise be relieved of any obligations as the result of the delay. In the event of a delay in delivery in excess of ninety (90) consecutive days, the Buyer and GFC each have the right upon written notice to terminate the Contract or any undelivered portion thereof without penalty. Products for which delivery is delayed due to any cause within Buyer's control may be placed in storage by GFC at Buyer's risk and expense and for its account. Buyer will be liable for all costs and expenses incurred by GFC in holding or storing Products for Buyer or at Buyer's request. GFC reserves the right to withhold shipments in whole or in part if Buyer fails to make any payment to GFC when due or otherwise fails to perform its obligations hereunder.

9. **Cancellations.** If Buyer cancels an order for any reason, fails or refuses, or for any reason is unable to accept delivery of any of the Products it has ordered, or if Buyer requests the diversion of a delivery from GFC, Buyer shall be liable for and pay to GFC, promptly on demand, the full purchase price and all costs and expenses incurred by GFC in filling and shipping Buyer's order or by reason of such diversion, including costs of demurrage and storage.

10. **Product Return.** Only new, unused and undamaged Products in the original boxes are eligible for return up to ninety (90) days from the date of shipment provided that GFC approves in advance any such return. GFC reserves the right to inspect any returned goods, and no return is final until confirmed in writing to the Buyer by an authorized representative of GFC. Buyer must provide with any returned goods an RMA number provided to Buyer by GFC. Any returns of Product may be subject to a restocking charge. Upon Buyer's compliance with its obligations under this Section, GFC will provide Buyer notification of the total value of such returned goods that GFC, in its sole discretion, has accepted. A credit will be issued to Buyer for such value, less any restocking fee to be determined by GFC. Products not accepted for return will be returned to Buyer F.O.B. GFC's facility.

11. **Warranty.**

a) **Warranty.** GFC warrants that the Products provided to Buyer shall for a period of one (1) year from the date of delivery from GFC's facility ("Warranty Period") (i) meet the specifications for the Products if any provided by GFC; and (ii) be free from defects in workmanship and material.

b) **Remedy.** If a Product is defective in workmanship or material or does not meet the specifications, if any, provided Buyer provides prompt written notice of the defect within the Warranty Period, GFC will at its option, during the Warranty Period, (i) repair or replace the Product at no charge to Buyer; or (ii) provide to Buyer a credit equal to the purchase price of the Product. Freight charges for Products returned to GFC for repair/warranty analysis are the responsibility of Buyer, and upon such return, Buyer must properly package such Product to protect against risk of loss and damage. Such repair, replacement or issuance of a credit shall be Buyer's sole and exclusive remedy with respect to a breach of the warranty set forth herein. All costs of de-installation or re-installation of the Product shall be borne by Buyer. Products that are repaired or replaced during the Warranty Period are warranted for a period of six (6) months from the date of repair or replacement or the unexpired term of the original Warranty Period, whichever period is longer. Where Products are replaced pursuant to this Section, Buyer shall be invoiced for the replaced Products and then issued a credit for such Products. If it is determined by GFC that the Product returned is not defective, Buyer agrees to pay GFC an evaluation fee of Two Hundred (USD 200) Dollars per return.

c) **Warranty Exclusions.** If, however, upon inspection of any of the Products to which this warranty applies, GFC determines that a claimed defect resulted from (i) normal wear and tear, including corrosion; (ii) installation and/or maintenance by Buyer or a third party; (iii) misuse or abuse, whether willful or negligent, of any of the Products by any person other than GFC; (iv) modifications, alterations, service, repair or replacement made by Buyer or a third party during the Warranty Period that were not requested or authorized by GFC; (v) any combination or use of the Products with any incompatible equipment or ancillary products that may be connected to the Products; (vi) failure of Buyer to maintain environmental conditions in accordance with GFC specifications or instructions, including but not limited to, temperature and humidity control; (vii) failure to follow all instructions provided by GFC (whether oral or written); (viii) customized equipment manufactured by third parties for incorporation into any of the Products; (ix) defects or errors in any custom specifications provided by Buyer; (x) causes beyond GFC reasonable control; or (xi) causes other than our workmanship or materials, then the warranty shall be null and void and cease to apply. GFC shall have the sole right to determine whether Products are actually defective and the cause of the alleged defect.

THE WARRANTIES IN THIS SECTION ARE IN LIEU OF ALL OTHER WARRANTIES, EXPRESS OR IMPLIED, INCLUDING BUT NOT LIMITED TO THE IMPLIED WARRANTIES OF MERCHANTABILITY, FITNESS FOR A PARTICULAR PURPOSE, FITNESS FOR A SPECIFIC APPLICATION BY BUYER, PERIOD OF SERVICE AND NON-INFRINGEMENT. NO EMPLOYEE OR AGENT OF GFC, OTHER THAN AN OFFICER OR OTHER AUTHORIZED REPRESENTATIVE OF GFC, IS AUTHORIZED TO MAKE ANY WARRANTY IN ADDITION TO THE FOREGOING.

Without limiting the foregoing, GFC does not warrant that the Products will be suitable for Buyer's specific needs, will work in any particular environment, will perform without interruption or be error free, or will work in conjunction with Buyer's equipment.

12. **Evaluation Products.** From time to time, GFC may provide Buyer with sample or prototype Products for test and evaluation purposes only ("Evaluation Products"). During the evaluation period, GFC is the owner of and retains title to the Evaluation Products. All Evaluation Products shall be provided "AS IS" without warranty of any kind. Buyer agrees that any use of the Evaluation Product is at Buyer's sole risk. Under no circumstances shall the Evaluation Products be used in any production or commercial environment, technology, device or other machinery and GFC shall assume no liability for such unauthorized use.

13. **Patent Indemnification.** GFC shall have no liability for infringement of any United States patents, trademarks or copyrights (hereinafter collectively referred to as the "Intellectual Property Rights") except as specifically provided in this Section. Any liability of GFC shall be limited as set forth elsewhere in the Conditions. GFC will defend and indemnify Buyer against allegations of infringement of Intellectual Property Rights subject to the limitations and conditions set forth in this Section. GFC will defend, at its expense, and will pay the cost of any settlement or damages awarded in any action brought against Buyer based on an allegation that a Product sold to Buyer infringes the Intellectual Property Rights of a third party. GFC obligation to defend and indemnify Buyer is contingent on Buyer notifying GFC within ten (10) days after Buyer becomes aware of such allegations of infringement, and GFC having sole control over the defense of any allegations or actions including all negotiations for settlement or compromise. If a Product is subject to a claim that it infringes the Intellectual Property Rights of a third party, GFC may, in its sole discretion, procure for Buyer the right to continue using the Product, replace or modify the Product so as to make it non-infringing, or offer to accept return of the Product and return the purchase price less a reasonable allowance for depreciation. Notwithstanding the foregoing, GFC shall have no liability for claims of infringement based on information provided by Buyer, or directed to Products for which the designs are specified in whole or in part by Buyer, or infringements resulting from the modification, combination or use in a system of the Products. The foregoing provisions of this Section shall constitute GFC's sole and exclusive liability and Buyer's sole and exclusive remedy for infringement of Intellectual Property Rights. If a claim is based on information or designs provided in whole or in part by Buyer, Buyer shall defend and indemnify GFC for all costs, expenses or judgments resulting from any claim that such Product infringes the Intellectual Property Rights of a third party.

14. **Buyer Indemnity.** Buyer agrees to defend, indemnify and hold GFC harmless from any and all liability, and to pay all costs and attorney's fees, for injury or damage to persons or property caused in any manner by the Products while in possession or under the control of Buyer or Buyer's customer except as expressly set forth elsewhere in these Conditions.

15. **Disclaimer of Certain Damages.** IN NO EVENT SHALL GFC BE LIABLE (AND BUYER WAIVES ALL CLAIMS AGAINST GFC) FOR CONSEQUENTIAL, INCIDENTAL, EXEMPLARY, PUNITIVE, SPECIAL OR INDIRECT DAMAGES, COSTS OR EXPENSES BASED UPON NEGLIGENCE, BREACH OF WARRANTY, BREACH OF CONTRACT, STRICT LIABILITY IN TORT, OR ANY OTHER LEGAL THEORY OR CAUSE OF ACTION ARISING, DIRECTLY OR INDIRECTLY, FROM PRODUCTS THAT ARE THE SUBJECT OF THIS CONTRACT, OR THE USE OR FAILURE THEREOF, INCLUDING BUT NOT LIMITED TO, DAMAGES FOR LOSS OF PRODUCTION, PROFITS OR INJURY TO PERSONS OR PROPERTY. THIS DISCLAIMER SHALL REMAIN IN FULL FORCE AND EFFECT EVEN IN THE EVENT THAT BUYER'S SOLE AND EXCLUSIVE REMEDY SHALL FAIL OF ITS ESSENTIAL PURPOSE.

16. **Limitation of Liability.** GFC'S MAXIMUM LIABILITY SHALL NOT EXCEED THE PRICE PAID BY BUYER FOR THE PRODUCT(S) THAT GAVE RISE TO ANY SUCH LIABILITY. THE PROVISIONS OF THIS PARAGRAPH SHALL SURVIVE ANY TERMINATION OR EXPIRATION OF THE CONTRACT AND SHALL APPLY REGARDLESS OF THE BASIS OF BUYER'S CLAIM, BE IT IN CONTRACT, WARRANTY, TORT OR OTHERWISE. THE REMEDIES OF BUYER CONTAINED IN THIS CONTRACT ARE EXCLUSIVE AND IN LIEU OF ANY OTHER REMEDIES AVAILABLE TO BUYER UNDER APPLICABLE LAW.

17. **Compliance.**

a) Buyer shall comply with all applicable governmental laws, ordinances, codes, rules, regulations and orders in its performance hereunder, and shall obtain all permits or licenses required in connection with the purchase, transfer, shipment, installation or use of any of the Products.
b) The export or re-export of the Products and related technical data supplied hereunder, if any, may be subject to regulation or restriction under the United States Export Administration Act, the Arms Export Control Act, the U.K. Export Control Organization, or other similar laws. Buyer shall not sell, re-export, transfer or otherwise dispose of the Products or any related technical data in violation of U.S., U.K. laws or any other applicable export laws. Buyer shall have sole responsibility for obtaining all applicable licenses or authorizations at its sole cost and expense.

18. **Inspection and Acceptance of Products.** Final inspection and acceptance of Products provided under this Contract shall be made by Buyer within fourteen (14) days of receipt of the Products at Buyer's facility, except in the case where Buyer's source inspector or authorized representative inspects the Goods at Seller's facility. Failure of Buyer to inspect and reject in writing said Products within the above time period (where source inspection is not applicable) shall be deemed to mean acceptance has occurred.

19. **Assignment.** Buyer may not delegate any duties nor assign any rights or claims hereunder without GFC's prior written consent, and any such attempted delegation or assignment shall be void.

20. **Buyer's Default; Insolvency.** If Buyer becomes insolvent or if Buyer is in default for any reason under the terms of this Contract or any other agreement between Buyer and GFC, GFC shall be entitled, at GFC's option, to discontinue further performance of all or part of the Contract, to withhold shipments, in whole or in part, and/or to recall Products in transit, retake same, and repossess all Products which may be stored with GFC for Buyer's account, without the necessity of taking any other proceedings.

21. **Governing Law.** The rights and obligations of the Parties hereunder shall be governed by and interpreted, construed and enforced in accordance with the laws of the State of Florida. The Parties expressly reject the application to this Contract of the United Nations Convention on Contracts for the International Sale of Goods. No actions arising out of the sale of the Products, other than in an action to recover the purchase price of the Products, may be brought by either party more than one (1) year after the cause of action accrues.

22. **Severability; Remedies; Waiver.** In the event that any one or more provisions contained herein (other than the provisions obligating Buyer to pay GFC for the Products) shall be held by a court of competent jurisdiction to be invalid, illegal or unenforceable in any respect, the validity, legality and enforceability of the remaining provisions contained herein shall not in any way be affected or impaired thereby. GFC's failure to enforce, or waiver of a breach of, any provision contained herein shall not constitute a waiver of any other breach or of such provision.

23. **Notices.** Any notice or communication required or permitted hereunder shall be in writing and shall be deemed received three days after being sent via registered mail with return receipt requested, by courier (for example DHL or FedEx), by first-class mail, postage prepaid, or via email (with evidence of receipt required) to GFC or Buyer at the address specified in the Contract or at such other address, including email addresses, as either party may from time to time designate to the other in writing.

24. **Entire Agreement.** This is the complete and exclusive statement of the agreement between GFC and Buyer with respect to Buyer's purchase of the Products. No waiver, consent, modification, amendment or change of the terms contained herein shall be binding unless in writing and signed by GFC and Buyer.